



**ELECTRONIC COPY**

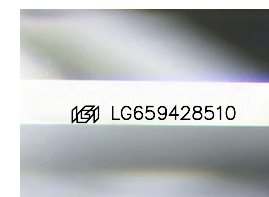
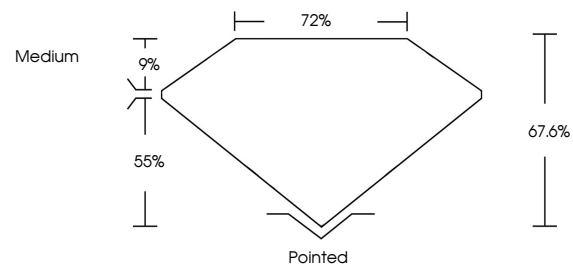
LG659428510  
Report verification at [igi.org](http://igi.org)



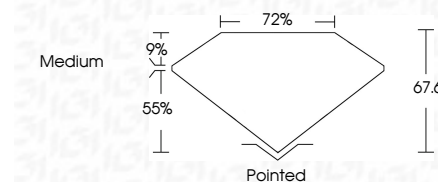
February 17, 2025  
IGI Report Number **LG659428510**  
Description **LABORATORY GROWN DIAMOND**  
Shape and Cutting Style **PRINCESS CUT**  
Measurements **9.80 X 9.65 X 6.52 MM**  
**GRADING RESULTS**  
Carat Weight **5.13 CARATS**  
Color Grade **G**  
Clarity Grade **VS 2**  
Cut Grade **EXCELLENT**

February 17, 2025  
IGI Report Number **LG659428510**  
Description **LABORATORY GROWN DIAMOND**  
Shape and Cutting Style **PRINCESS CUT**  
Measurements **9.80 X 9.65 X 6.52 MM**  
**GRADING RESULTS**  
Carat Weight **5.13 CARATS**  
Color Grade **G**  
Clarity Grade **VS 2**  
Cut Grade **EXCELLENT**

**PROPORTIONS**



Sample Image Used



**ADDITIONAL GRADING INFORMATION**  
Polish **EXCELLENT**  
Symmetry **EXCELLENT**  
Fluorescence **NONE**  
Inscription(s) **IGI LG659428510**

**ADDITIONAL GRADING INFORMATION**  
Polish **EXCELLENT**  
Symmetry **EXCELLENT**  
Fluorescence **NONE**  
Inscription(s) **IGI LG659428510**

**COLOR**

D E F G H I J Faint Very Light Light

**CLARITY**

IF	WS <sup>1-2</sup>	VS <sup>1-2</sup>	SI <sup>1-2</sup>	I <sup>1-3</sup>
Internally Flawless	Very Very Slightly Included	Very Slightly Included	Slightly Included	Included



**IGI**

February 17, 2025  
IGI Report No **LG659428510**  
**PRINCESS CUT**  
**5.13 CARATS**  
Carat Weight **G**  
Color Grade **VS 2**  
Clarity Grade **EXCELLENT**  
Depth **67.6%**  
Table **72%**  
Girdle **Medium**  
Culet **Pointed**  
Polish **EXCELLENT**  
Symmetry **EXCELLENT**  
Fluorescence **NONE**  
Inscriptions(s) **IGI LG659428510**