



ELECTRONIC COPY

LABORATORY GROWN DIAMOND REPORT

October 18, 2024	
IGI Report Number	LG659441538
Description	LABORATORY GROWN DIAMOND
Shape and Cutting Style	SQUARE CUSHION MODIFIED BRILLIANT
Measurements	7.93 X 7.71 X 5.18 MM

GRADING RESULTS

Carat Weight	3.05 CARATS
Color Grade	FANCY INTENSE YELLOW
Clarity Grade	VS 1

ADDITIONAL GRADING INFORMATION

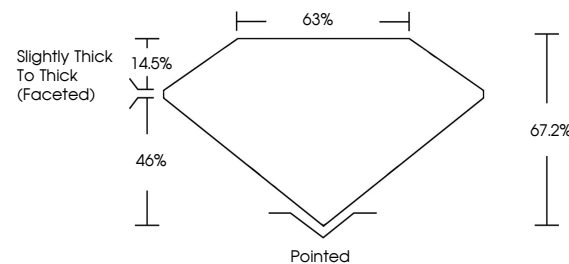
Polish	EXCELLENT
Symmetry	EXCELLENT
Fluorescence	NONE
Inscription(s)	 LG659441538

Comments: This Laboratory Grown Diamond was created by Chemical Vapor Deposition (CVD) growth process.

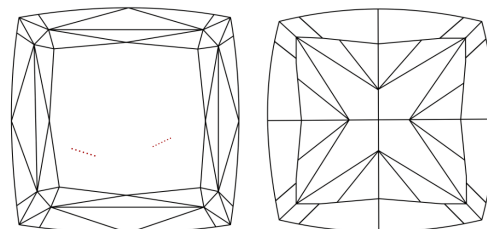
Secondary color: Grey

LG659441538
Report verification at igi.org

PROPORTIONS

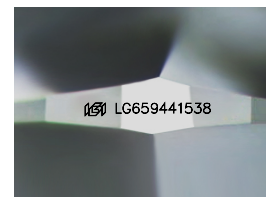


CLARITY CHARACTERISTICS



KEY TO SYMBOLS

Red symbols indicate internal characteristics.
Green symbols indicate external characteristics.



Sample Image Used

COLOR

D E F G H I J Faint Very Light Light

CLARITY

IF	VVS ¹⁻²	VS ¹⁻²	SI ¹⁻²	I ¹⁻³
Internally Flawless	Very Very Slightly Included	Very Slightly Included	Slightly Included	Included



© IGI 2020, International Gemological Institute

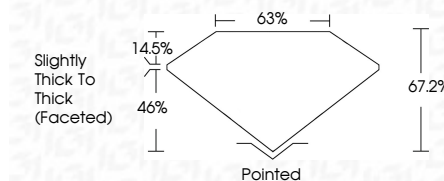
FD - 10 20



LABORATORY GROWN DIAMOND REPORT



October 18, 2024	
IGI Report Number	LG659441538
Description	LABORATORY GROWN DIAMOND
Shape and Cutting Style	SQUARE CUSHION MODIFIED BRILLIANT
Measurements	7.93 X 7.71 X 5.18 MM
GRADING RESULTS	
Carat Weight	3.05 CARATS
Color Grade	FANCY INTENSE YELLOW
Clarity Grade	VS 1



ADDITIONAL GRADING INFORMATION

Polish	EXCELLENT
Symmetry	EXCELLENT
Fluorescence	NONE
Inscription(s)	15 LG659441536

Comments: This Laboratory Grown Diamond was created by Chemical Vapor Deposition (CVD) growth process.

Secondary color: Grey

October 18, 2024	Q1 Report No: LG59441538		SQUARE CLUSHION MOIFIED BRILLIANT	
		3.05 CARATS		
		FANCY INTENSE YELLOW		
		VSI 1		
		67.2%		
		65%		
		Slightly Thick to Thick (Faceted)		
		Pointed		
		EXCELLENT		
		EXCELLENT		
		NONE		
		lg51 LG59441538		

Comments:
 The Laboratory Grown Diamond was
 created by Chemical Vapor Deposition
 (CVD) growth process.
 Secondary color: Grey