



ELECTRONIC COPY

LG660422363
Report verification at igi.org



October 24, 2024

IGI Report Number **LG660422363**

Description **LABORATORY GROWN DIAMOND**

Shape and Cutting Style **CUT CORNERED
RECTANGULAR MODIFIED
BRILLIANT**

Measurements **8.43 X 5.62 X 3.61 MM**

GRADING RESULTS

Carat Weight **1.59 CARAT**

Color Grade **FANCY VIVID GREEN**

Clarity Grade **VVS 2**

LABORATORY GROWN DIAMOND REPORT

October 24, 2024

IGI Report Number **LG660422363**

Description **LABORATORY GROWN DIAMOND**

Shape and Cutting Style **CUT CORNERED RECTANGULAR
MODIFIED BRILLIANT**

Measurements **8.43 X 5.62 X 3.61 MM**

GRADING RESULTS

Carat Weight **1.59 CARAT**

Color Grade **FANCY VIVID GREEN**

Clarity Grade **VVS 2**

ADDITIONAL GRADING INFORMATION

Polish **EXCELLENT**

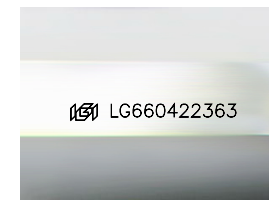
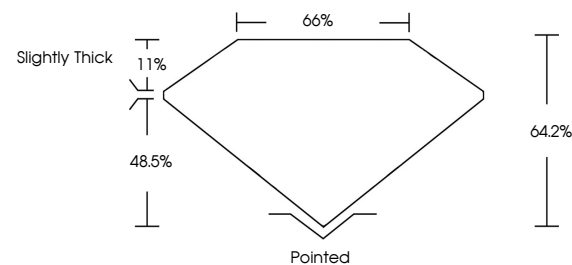
Symmetry **EXCELLENT**

Fluorescence **NONE**

Inscription(s) **IGI LG660422363**

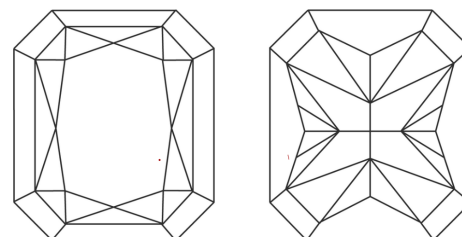
Comments: This Laboratory Grown Diamond was created by Chemical Vapor Deposition (CVD) growth process. Indications of post-growth treatment.

PROPORTIONS



Sample Image Used

CLARITY CHARACTERISTICS



KEY TO SYMBOLS

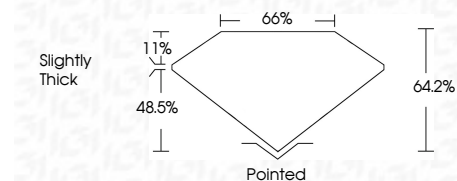
Red symbols indicate internal characteristics.
Green symbols indicate external characteristics.

COLOR

D E F G H I J Faint Very Light Light

CLARITY

IF	VS ¹⁻²	VS ¹⁻²	SI ¹⁻²	I ¹⁻³
Internally Flawless	Very Very Slightly Included	Very Slightly Included	Slightly Included	Included



ADDITIONAL GRADING INFORMATION

Polish **EXCELLENT**

Symmetry **EXCELLENT**

Fluorescence **NONE**

Inscription(s) **IGI LG660422363**

Comments: This Laboratory Grown Diamond was created by Chemical Vapor Deposition (CVD) growth process. Indications of post-growth treatment.



IGI



October 24, 2024
IGI Report No. LG660422363
CUT CORNERED RECT. MODIFIED BRILLIANT
8.43 X 5.62 X 3.61 MM
1.59 CARAT
FANCY VIVID GREEN
VVS 2
64.2%
48.5%
Slightly Thick
Pointed
EXCELLENT
EXCELLENT
NONE
IGI LG660422363
Comments: This Laboratory Grown Diamond was created by Chemical Vapor Deposition (CVD) growth process. Indications of post-growth treatment.