



ELECTRONIC COPY

LG660422372
Report verification at igi.org



October 24, 2024

IGI Report Number **LG660422372**

Description **LABORATORY GROWN DIAMOND**

Shape and Cutting Style **TRIANGULAR BRILLIANT**

Measurements **6.56 X 6.71 X 4.33 MM**

GRADING RESULTS

Carat Weight **1.00 CARAT**

Color Grade **FANCY VIVID GREEN**

Clarity Grade **VVS 1**

October 24, 2024

IGI Report Number **LG660422372**

Description **LABORATORY GROWN DIAMOND**

Shape and Cutting Style **TRIANGULAR BRILLIANT**

Measurements **6.56 X 6.71 X 4.33 MM**

GRADING RESULTS

Carat Weight **1.00 CARAT**

Color Grade **FANCY VIVID GREEN**

Clarity Grade **VVS 1**

ADDITIONAL GRADING INFORMATION

Polish **EXCELLENT**

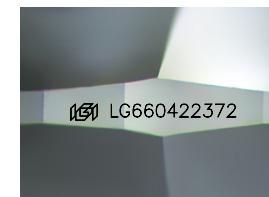
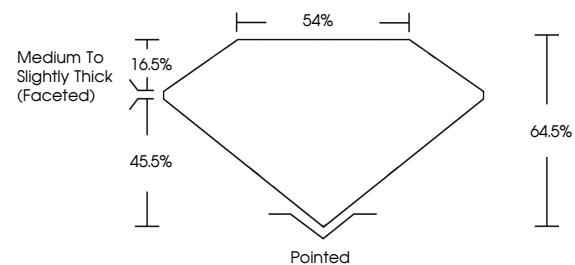
Symmetry **VERY GOOD**

Fluorescence **NONE**

Inscription(s) **IGI LG660422372**

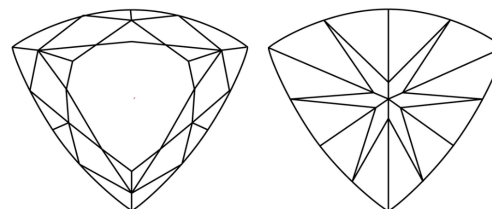
Comments: This Laboratory Grown Diamond was created by High Pressure High Temperature (HPHT) growth process. Indications of post-growth treatment.

PROPORTIONS



Sample Image Used

CLARITY CHARACTERISTICS



KEY TO SYMBOLS

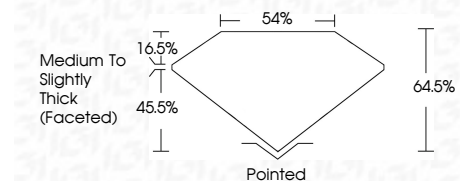
Red symbols indicate internal characteristics.
Green symbols indicate external characteristics.

COLOR

D E F G H I J Faint Very Light Light

CLARITY

IF	VVS ¹⁻²	VS ¹⁻²	SI ¹⁻²	I ¹⁻³
Internally Flawless	Very Very Slightly Included	Very Slightly Included	Slightly Included	Included



ADDITIONAL GRADING INFORMATION

Polish **EXCELLENT**

Symmetry **VERY GOOD**

Fluorescence **NONE**

Inscription(s) **IGI LG660422372**

Comments: This Laboratory Grown Diamond was created by High Pressure High Temperature (HPHT) growth process. Indications of post-growth treatment.



IGI



October 24, 2024	1.00 CARAT
IGI Report No LG660422372	FANCY VIVID GREEN
TRIANGULAR BRILLIANT	VVS 1
6.56 X 6.71 X 4.33 MM	64.5% 54%
Carat Weight	Medium to Slightly Thick (Faceted)
Color Grade	Pointed
Clarity Grade	EXCELLENT
Depth	VERY GOOD
Table	FLUORESCENCE
Girdle	NONE
	Inscription(s)
	IGI LG660422372

Comments: This Laboratory Grown Diamond was created by High Pressure High Temperature (HPHT) growth process. Indications of post-growth treatment.