



ELECTRONIC COPY

LG660440335
Report verification at igi.org



October 25, 2024

IGI Report Number **LG660440335**

Description **LABORATORY GROWN DIAMOND**

Shape and Cutting Style **EMERALD CUT**

Measurements **6.95 X 4.93 X 2.94 MM**

GRADING RESULTS

Carat Weight **1.02 CARAT**

Color Grade **FANCY VIVID YELLOW**

Clarity Grade **VS 1**

LABORATORY GROWN DIAMOND REPORT

October 25, 2024

IGI Report Number **LG660440335**

Description **LABORATORY GROWN DIAMOND**

Shape and Cutting Style **EMERALD CUT**

Measurements **6.95 X 4.93 X 2.94 MM**

GRADING RESULTS

Carat Weight **1.02 CARAT**

Color Grade **FANCY VIVID YELLOW**

Clarity Grade **VS 1**

ADDITIONAL GRADING INFORMATION

Polish **VERY GOOD**

Symmetry **VERY GOOD**

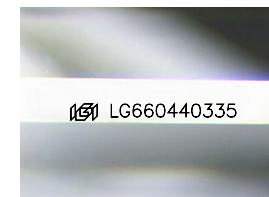
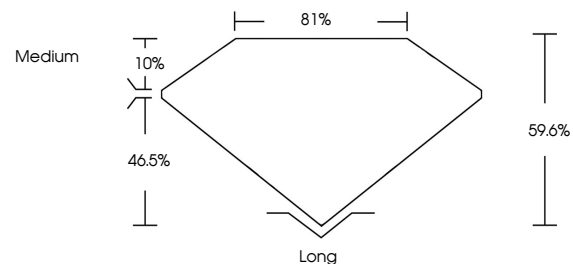
Fluorescence **NONE**

Inscription(s) **LG660440335**

Comments: As Grown - No indication of post-growth treatment.

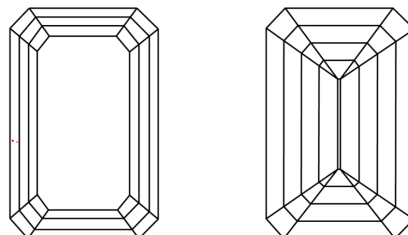
This Laboratory Grown Diamond was created by High Pressure High Temperature (HPHT) growth process.

PROPORTIONS



Sample Image Used

CLARITY CHARACTERISTICS



KEY TO SYMBOLS

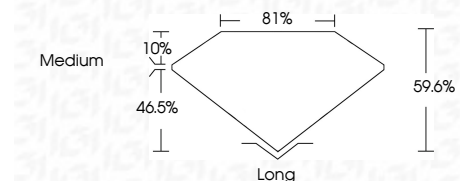
Red symbols indicate internal characteristics.
Green symbols indicate external characteristics.

COLOR

D E F G H I J Faint Very Light Light

CLARITY

IF	VS ¹⁻²	VS ¹⁻²	SI ¹⁻²	I ¹⁻³
Internally Flawless	Very Very Slightly Included	Very Slightly Included	Slightly Included	Included



ADDITIONAL GRADING INFORMATION

Polish **VERY GOOD**

Symmetry **VERY GOOD**

Fluorescence **NONE**

Inscription(s) **LG660440335**

Comments: As Grown - No indication of post-growth treatment.

This Laboratory Grown Diamond was created by High Pressure High Temperature (HPHT) growth process.



October 25, 2024
IGI Report No. LG660440335
EMERALD CUT

1.02 CARAT
Carat Weight
FANCY VIVID YELLOW
Color Grade

VS 1
Clarity Grade
6.95 X 4.93 X 2.94 MM
Depth
81%
Table
Medium
Girdle

Long
Culet
VERY GOOD
Polish
VERY GOOD
Symmetry
NONE
Fluorescence
Inscription(s)
 LG660440335

Comments: As Grown - No indication of post-growth treatment.
This Laboratory Grown Diamond was created by High Pressure High Temperature (HPHT) growth process.