



ELECTRONIC COPY

LG660443010
Report verification at igi.org



November 11, 2024
IGI Report Number **LG660443010**
Description **LABORATORY GROWN DIAMOND**
Shape and Cutting Style **CUT CORNERED
RECTANGULAR MODIFIED
BRILLIANT**
Measurements **8.53 X 6.32 X 4.42 MM**
GRADING RESULTS
Carat Weight **2.00 CARATS**
Color Grade **F**
Clarity Grade **VS 1**

LABORATORY GROWN DIAMOND REPORT

November 11, 2024
IGI Report Number **LG660443010**
Description **LABORATORY GROWN DIAMOND**
Shape and Cutting Style **CUT CORNERED RECTANGULAR
MODIFIED BRILLIANT**
Measurements **8.53 X 6.32 X 4.42 MM**

GRADING RESULTS

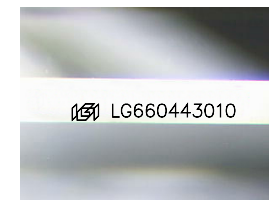
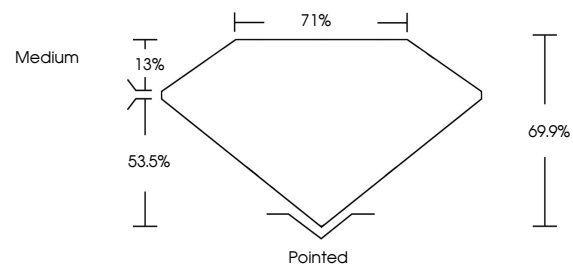
Carat Weight **2.00 CARATS**
Color Grade **F**
Clarity Grade **VS 1**

ADDITIONAL GRADING INFORMATION

Polish **EXCELLENT**
Symmetry **EXCELLENT**
Fluorescence **NONE**
Inscription(s) **IGI LG660443010**

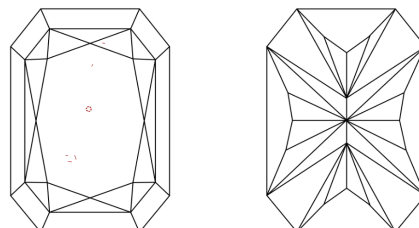
Comments: This Laboratory Grown Diamond was created by Chemical Vapor Deposition (CVD) growth process. Type IIa

PROPORTIONS



Sample Image Used

CLARITY CHARACTERISTICS



KEY TO SYMBOLS

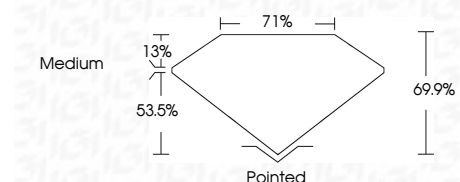
Red symbols indicate internal characteristics.
Green symbols indicate external characteristics.

COLOR

D E F G H I J Faint Very Light Light

CLARITY

IF	VS ¹⁻²	VS ¹⁻²	SI ¹⁻²	I ¹⁻³
Internally Flawless	Very Very Slightly Included	Very Slightly Included	Slightly Included	Included



ADDITIONAL GRADING INFORMATION

Polish **EXCELLENT**
Symmetry **EXCELLENT**
Fluorescence **NONE**
Inscription(s) **IGI LG660443010**
Comments: This Laboratory Grown Diamond was created by Chemical Vapor Deposition (CVD) growth process. Type IIa



November 11, 2024
IGI Report No **LG660443010**
CUT CORNERED RECT. MODIFIED BRILLIANT
8.53 X 6.32 X 4.42 MM
Carat Weight **2.00 CARATS**
Color Grade **F**
Clarity Grade **VS 1**
Depth **69.9%**
Table **71%**
Girdle **Medium**
Culet **Pointed**
Polish **EXCELLENT**
Symmetry **EXCELLENT**
Fluorescence **NONE**
Inscription(s) **IGI LG660443010**
Comments: This Laboratory Grown Diamond was created by Chemical Vapor Deposition (CVD) growth process. Type IIa