



ELECTRONIC COPY

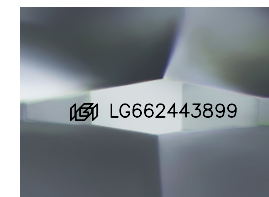
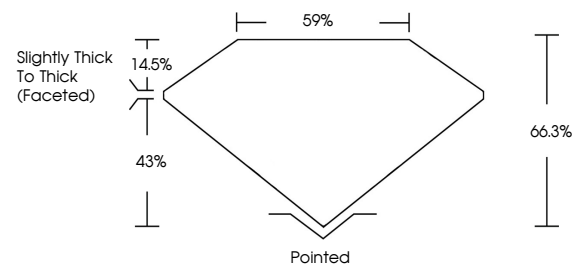
LG662443899
Report verification at igi.org



November 22, 2024
IGI Report Number **LG662443899**
Description **LABORATORY GROWN DIAMOND**
Shape and Cutting Style **SQUARE CUSHION MODIFIED BRILLIANT**
Measurements **8.71 X 8.67 X 5.75 MM**
GRADING RESULTS
Carat Weight **4.12 CARATS**
Color Grade **FANCY YELLOW**
Clarity Grade **VS 2**

November 22, 2024
IGI Report Number **LG662443899**
Description **LABORATORY GROWN DIAMOND**
Shape and Cutting Style **SQUARE CUSHION MODIFIED BRILLIANT**
Measurements **8.71 X 8.67 X 5.75 MM**

PROPORTIONS

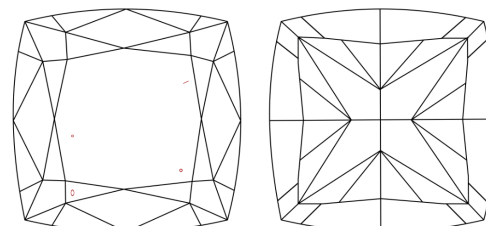


Sample Image Used

GRADING RESULTS

Carat Weight **4.12 CARATS**
Color Grade **FANCY YELLOW**
Clarity Grade **VS 2**

CLARITY CHARACTERISTICS



KEY TO SYMBOLS

Red symbols indicate internal characteristics.
Green symbols indicate external characteristics.

ADDITIONAL GRADING INFORMATION

Polish **EXCELLENT**
Symmetry **EXCELLENT**
Fluorescence **NONE**
Inscription(s) **IGI LG662443899**

Comments: This Laboratory Grown Diamond was created by Chemical Vapor Deposition (CVD) growth process.

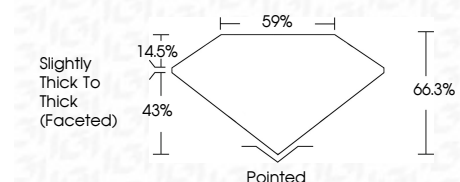
COLOR

D E F G H I J Faint Very Light Light

CLARITY

IF VS¹⁻² VS¹⁻² SI¹⁻² I¹⁻³

Internally Flawless Very Very Slightly Included Very Slightly Included Slightly Included Included



ADDITIONAL GRADING INFORMATION

Polish **EXCELLENT**
Symmetry **EXCELLENT**
Fluorescence **NONE**
Inscription(s) **IGI LG662443899**
Comments: This Laboratory Grown Diamond was created by Chemical Vapor Deposition (CVD) growth process.



November 22, 2024
IGI Report No **LG662443899**
SQUARE CUSHION MODIFIED BRILLIANT
8.71 X 8.67 X 5.75 MM
Carat Weight **4.12 CARATS**
Color Grade **FANCY YELLOW**
Clarity Grade **VS 2**
Depth **14.5%**
Table **59%**
Girdle **Slightly Thick To Thick (Faceted)**
Culet **Pointed**
Polish **EXCELLENT**
Symmetry **EXCELLENT**
Fluorescence **NONE**
Inscription(s) **IGI LG662443899**
Comments: This Laboratory Grown Diamond was created by Chemical Vapor Deposition (CVD) growth process.