



ELECTRONIC COPY

LG662483136
Report verification at igi.org



November 18, 2024

IGI Report Number **LG662483136**

Description **LABORATORY GROWN DIAMOND**

Shape and Cutting Style **PEAR BRILLIANT**

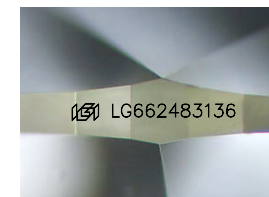
Measurements **13.00 X 11.74 X 5.36 MM**

GRADING RESULTS

Carat Weight **4.96 CARATS**

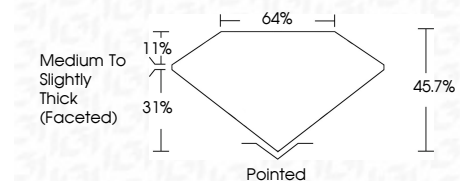
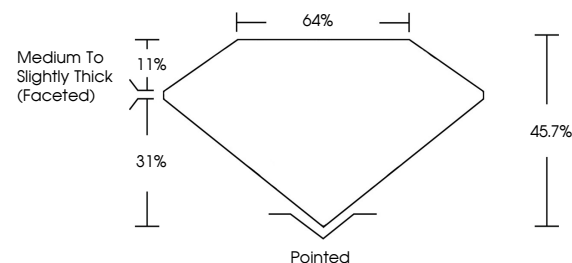
Color Grade **FANCY VIVID GREEN**

Clarity Grade **VS 1**

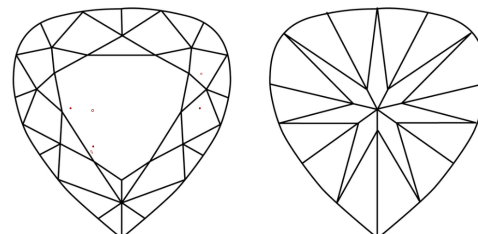


Sample Image Used

PROPORTIONS



CLARITY CHARACTERISTICS



KEY TO SYMBOLS

Red symbols indicate internal characteristics.
Green symbols indicate external characteristics.

COLOR

D E F G H I J Faint Very Light Light

CLARITY

IF WS¹⁻² VS¹⁻² SI¹⁻² I¹⁻³

Internally Flawless Very Very Slightly Included Very Slightly Included Slightly Included Included

ADDITIONAL GRADING INFORMATION

Polish **EXCELLENT**

Symmetry **EXCELLENT**

Fluorescence **VERY SLIGHT**

Inscription(s) **IGI LG662483136**

Comments: This Laboratory Grown Diamond was created by Chemical Vapor Deposition (CVD) growth process. Indications of post-growth treatment.



IGI



November 18, 2024
IGI Report No. LG662483136
PEAR BRILLIANT

13.00 X 11.74 X 5.36 MM
4.96 CARATS
FANCY VIVID GREEN
VS 1
45.7%
64%

Medium to Slightly Thick (Faceted)

Pointed
EXCELLENT
EXCELLENT
VERY SLIGHT
IGI LG662483136

Comments: This Laboratory Grown Diamond was created by Chemical Vapor Deposition (CVD) growth process. Indications of post-growth treatment.