



ELECTRONIC COPY

LG665454225
Report verification at igi.org



November 30, 2024
IGI Report Number **LG665454225**
Description **LABORATORY GROWN DIAMOND**
Shape and Cutting Style **SQUARE CUSHION MODIFIED BRILLIANT**
Measurements **10.00 X 9.99 X 6.95 MM**
GRADING RESULTS
Carat Weight **6.44 CARATS**
Color Grade **FANCY VIVID GREEN**
Clarity Grade **VS 1**

LABORATORY GROWN DIAMOND REPORT

November 30, 2024
IGI Report Number **LG665454225**
Description **LABORATORY GROWN DIAMOND**
Shape and Cutting Style **SQUARE CUSHION MODIFIED BRILLIANT**
Measurements **10.00 X 9.99 X 6.95 MM**

GRADING RESULTS

Carat Weight **6.44 CARATS**
Color Grade **FANCY VIVID GREEN**
Clarity Grade **VS 1**

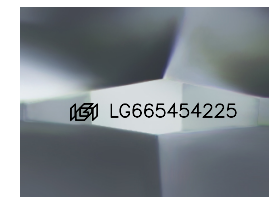
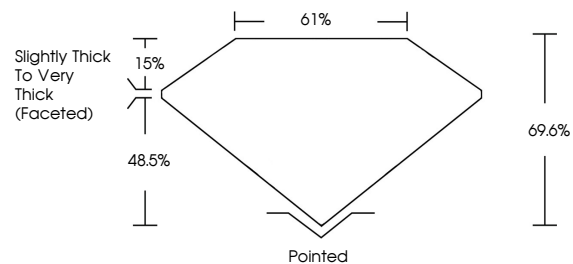
ADDITIONAL GRADING INFORMATION

Polish **VERY GOOD**
Symmetry **VERY GOOD**
Fluorescence **NONE**
Inscription(s) **IGI LG665454225**

Comments: This Laboratory Grown Diamond was created by Chemical Vapor Deposition (CVD) growth process.
Indications of post-growth treatment.

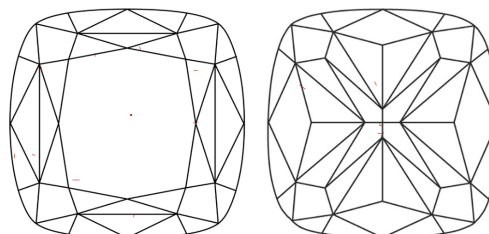
Secondary color: Blue

PROPORTIONS



Sample Image Used

CLARITY CHARACTERISTICS



KEY TO SYMBOLS

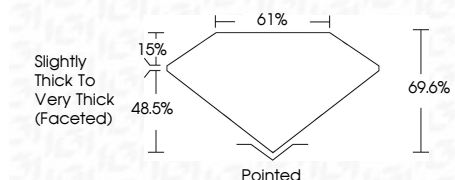
Red symbols indicate internal characteristics.
Green symbols indicate external characteristics.

COLOR

D E F G H I J Faint Very Light Light

CLARITY

IF	VS ¹⁻²	VS ¹⁻²	SI ¹⁻²	I ¹⁻³
Internally Flawless	Very Very Slightly Included	Very Slightly Included	Slightly Included	Included



ADDITIONAL GRADING INFORMATION

Polish **VERY GOOD**
Symmetry **VERY GOOD**
Fluorescence **NONE**
Inscription(s) **IGI LG665454225**
Comments: This Laboratory Grown Diamond was created by Chemical Vapor Deposition (CVD) growth process.
Indications of post-growth treatment.
Secondary color: Blue



November 30, 2024
IGI Report No. LG665454225
SQUARE CUSHION MODIFIED BRILLIANT
10.00 X 9.99 X 6.95 MM
6.44 CARATS
FANCY VIVID GREEN
VS 1
69.6%
61%
Slightly Thick To Very Thick (Faceted)
Pointed
VERY GOOD
VERY GOOD
NONE
IGI LG665454225
Comments: This Laboratory Grown Diamond was created by Chemical Vapor Deposition (CVD) growth process.
Indications of post-growth treatment.
Secondary color: Blue