



**ELECTRONIC COPY**

LG667401715  
Report verification at igi.org



November 27, 2024  
IGI Report Number **LG667401715**  
Description **LABORATORY GROWN DIAMOND**  
Shape and Cutting Style **OCTAGONAL MODIFIED BRILLIANT**  
Measurements **6.16 X 6.20 X 4.03 MM**  
**GRADING RESULTS**  
Carat Weight **1.03 CARAT**  
Color Grade **F**  
Clarity Grade **VVS 2**

**LABORATORY GROWN DIAMOND REPORT**

November 27, 2024  
IGI Report Number **LG667401715**  
Description **LABORATORY GROWN DIAMOND**  
Shape and Cutting Style **OCTAGONAL MODIFIED BRILLIANT**  
Measurements **6.16 X 6.20 X 4.03 MM**

**GRADING RESULTS**

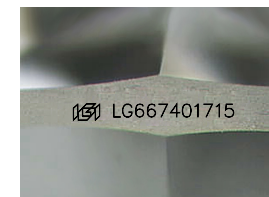
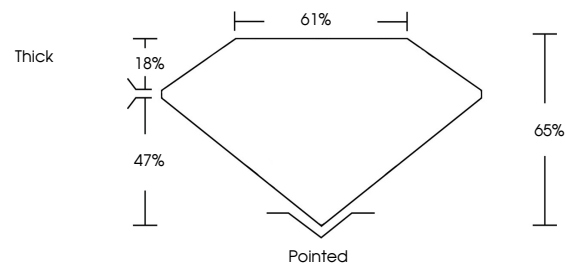
Carat Weight **1.03 CARAT**  
Color Grade **F**  
Clarity Grade **VVS 2**

**ADDITIONAL GRADING INFORMATION**

Polish **EXCELLENT**  
Symmetry **EXCELLENT**  
Fluorescence **NONE**  
Inscription(s) **IGI LG667401715**

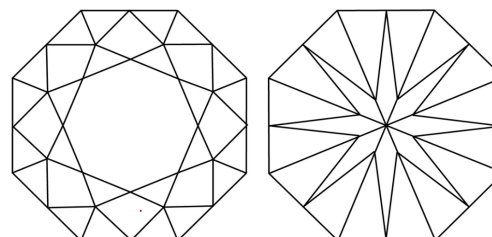
Comments: This Laboratory Grown Diamond was created by Chemical Vapor Deposition (CVD) growth process.  
Type IIa

**PROPORTIONS**



Sample Image Used

**CLARITY CHARACTERISTICS**



**KEY TO SYMBOLS**

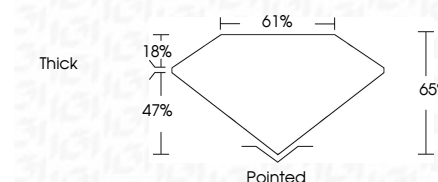
Red symbols indicate internal characteristics.  
Green symbols indicate external characteristics.

**COLOR**

D E F G H I J Faint Very Light Light

**CLARITY**

IF	VS <sup>1-2</sup>	VS <sup>1-2</sup>	SI <sup>1-2</sup>	I <sup>1-3</sup>
Internally Flawless	Very Very Slightly Included	Very Slightly Included	Slightly Included	Included



**ADDITIONAL GRADING INFORMATION**

Polish **EXCELLENT**  
Symmetry **EXCELLENT**  
Fluorescence **NONE**  
Inscription(s) **IGI LG667401715**  
Comments: This Laboratory Grown Diamond was created by Chemical Vapor Deposition (CVD) growth process.  
Type IIa



November 27, 2024  
IGI Report No LG667401715  
OCTAGONAL MODIFIED BRILLIANT  
6.16 X 6.20 X 4.03 MM  
1.03 CARAT  
F  
VVS 2  
65%  
61%  
Thick  
Pointed  
EXCELLENT  
EXCELLENT  
NONE  
IGI LG667401715

Comments: This Laboratory Grown Diamond was created by Chemical Vapor Deposition (CVD) growth process.  
Type IIa