



ELECTRONIC COPY

LG667407064
Report verification at igi.org



November 28, 2024
IGI Report Number **LG667407064**
Description **LABORATORY GROWN DIAMOND**
Shape and Cutting Style **SQUARE CUSHION MODIFIED BRILLIANT**
Measurements **6.93 X 6.77 X 4.71 MM**
GRADING RESULTS
Carat Weight **1.99 CARAT**
Color Grade **FANCY YELLOW**
Clarity Grade **VS 2**

LABORATORY GROWN DIAMOND REPORT

November 28, 2024
IGI Report Number **LG667407064**
Description **LABORATORY GROWN DIAMOND**
Shape and Cutting Style **SQUARE CUSHION MODIFIED BRILLIANT**
Measurements **6.93 X 6.77 X 4.71 MM**

GRADING RESULTS

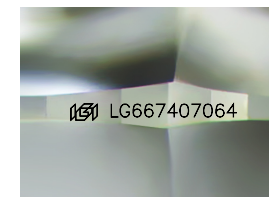
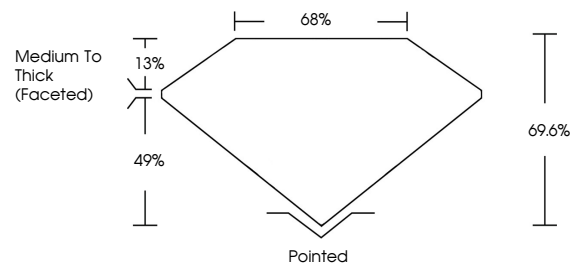
Carat Weight **1.99 CARAT**
Color Grade **FANCY YELLOW**
Clarity Grade **VS 2**

ADDITIONAL GRADING INFORMATION

Polish **VERY GOOD**
Symmetry **EXCELLENT**
Fluorescence **NONE**
Inscription(s) **IGI LG667407064**

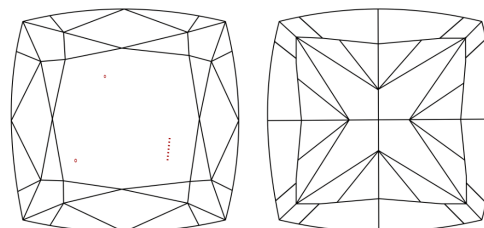
Comments: This Laboratory Grown Diamond was created by Chemical Vapor Deposition (CVD) growth process.

PROPORTIONS



Sample Image Used

CLARITY CHARACTERISTICS



KEY TO SYMBOLS

Red symbols indicate internal characteristics.
Green symbols indicate external characteristics.

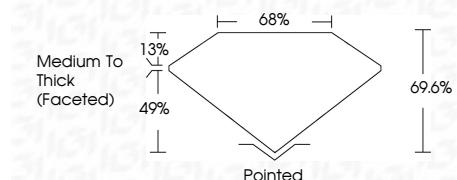
COLOR

D E F G H I J Faint Very Light Light

CLARITY

IF VS¹⁻² VS¹⁻² SI¹⁻² I¹⁻³

Internally Flawless Very Very Slightly Included Very Slightly Included Slightly Included Included



ADDITIONAL GRADING INFORMATION

Polish **VERY GOOD**
Symmetry **EXCELLENT**
Fluorescence **NONE**
Inscription(s) **IGI LG667407064**
Comments: This Laboratory Grown Diamond was created by Chemical Vapor Deposition (CVD) growth process.



November 28, 2024
IGI Report No **LG667407064**
SQUARE CUSHION MODIFIED BRILLIANT
6.93 X 6.77 X 4.71 MM
Carat Weight **1.99 CARAT**
Color Grade **FANCY YELLOW**
Clarity Grade **VS 2**
Depth **49.0%**
Table **13.0%**
Girdle **Medium To Thick (Faceted)**
Culet **Pointed**
Polish **VERY GOOD**
Symmetry **EXCELLENT**
Fluorescence **NONE**
Inscription(s) **IGI LG667407064**
Comments: This Laboratory Grown Diamond was created by Chemical Vapor Deposition (CVD) growth process.