



ELECTRONIC COPY

LG667443755
Report verification at igi.org



November 30, 2024

IGI Report Number **LG667443755**

Description **LABORATORY GROWN DIAMOND**

Shape and Cutting Style **ROUND BRILLIANT**

Measurements **9.81 - 9.84 X 5.90 MM**

GRADING RESULTS

Carat Weight **3.50 CARATS**

Color Grade **D**

Clarity Grade **VS 2**

Cut Grade **IDEAL**

November 30, 2024
IGI Report Number **LG667443755**
Description **LABORATORY GROWN DIAMOND**
Shape and Cutting Style **ROUND BRILLIANT**
Measurements **9.81 - 9.84 X 5.90 MM**

GRADING RESULTS

Carat Weight **3.50 CARATS**

Color Grade **D**

Clarity Grade **VS 2**

Cut Grade **IDEAL**

ADDITIONAL GRADING INFORMATION

Polish **EXCELLENT**

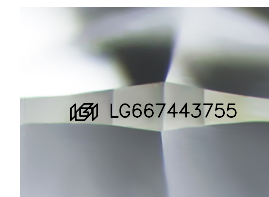
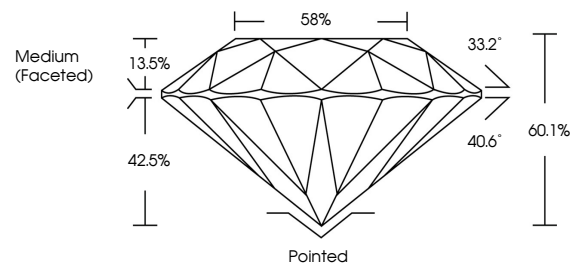
Symmetry **EXCELLENT**

Fluorescence **NONE**

Inscription(s) **LG667443755**

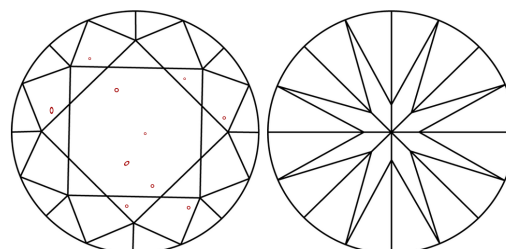
Comments: HEARTS & ARROWS
This Laboratory Grown Diamond was created by
Chemical Vapor Deposition (CVD) growth process.
Type IIa

PROPORTIONS



Sample Image Used

CLARITY CHARACTERISTICS



KEY TO SYMBOLS

Red symbols indicate internal characteristics.
Green symbols indicate external characteristics.



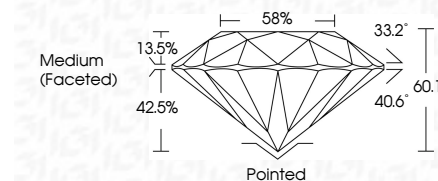
COLOR

D E F G H I J Faint Very Light Light

CLARITY

IF VS¹⁻² VS¹⁻² SI¹⁻² I¹⁻³

Internally Flawless Very Very Slightly Included Very Slightly Included Slightly Included Included



ADDITIONAL GRADING INFORMATION

Polish **EXCELLENT**

Symmetry **EXCELLENT**

Fluorescence **NONE**

Inscription(s) **LG667443755**

Comments: HEARTS & ARROWS
This Laboratory Grown Diamond was created by
Chemical Vapor Deposition (CVD) growth process.
Type IIa



November 30, 2024	IGI Report No LG667443755	3.50 CARATS	D	VS 2	IDEAL	60.1%	58%	Medium (Faceted)	Pointed	EXCELLENT	EXCELLENT	NONE	LG667443755
ROUND BRILLIANT	9.81 - 9.84 X 5.90 MM	Carat Weight	Color Grade	Clarity Grade	Cut Grade	Depth	Table	Girdle	Culet	Polish	Symmetry	Fluorescence	Inscription(s)