

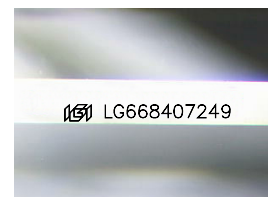
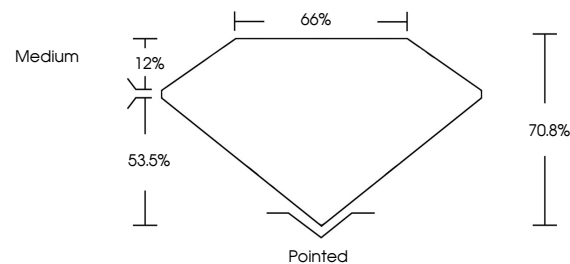


ELECTRONIC COPY

LABORATORY GROWN DIAMOND REPORT

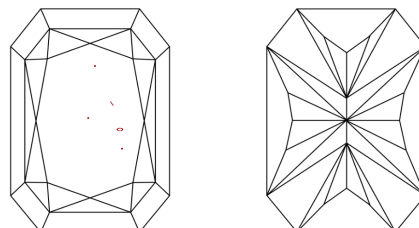
LG668407249
Report verification at lgi.org

PROPORTIONS



Sample Image Used

CLARITY CHARACTERISTICS



KEY TO SYMBOLS

Red symbols indicate internal characteristics.
Green symbols indicate external characteristics.

COLOR

D E F G H I J Faint Very Light Light

CLARITY

IF VWS¹⁻² VS¹⁻² SI¹⁻² I¹⁻³

Internally Flawless	Very Very Slightly Included	Very Slightly Included	Slightly Included	Included
------------------------	--------------------------------	---------------------------	----------------------	----------

LABORATORY GROWN DIAMOND REPORT



December 17, 2024

IGI Report Number **LG668407249**Description **LABORATORY GROWN DIAMOND**

Shape and Cutting Style

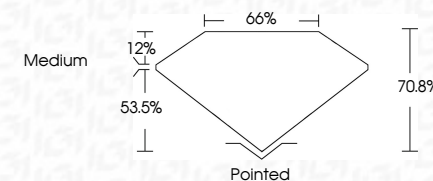
Measurements **8.71 X 6.17 X 4.37 MM**

GRADING RESULTS

Carat Weight **2.01 CARATS**

Color Grade F

Clarity Grade VS 1



ADDITIONAL GRADING INFORMATION

Polish **EXCELLENT**Symmetry **EXCELLENT**Fluorescence NONEInscription(s) **13** LG668407249

Comments: This Laboratory Grown Diamond was created by Chemical Vapor Deposition (CVD) growth process.
Type IIa



© IGI 2020, International Gemological Institute

FD - 10 20

www.igi.org

THIS DOCUMENT WAS PRODUCED WITH THE FOLLOWING SECURITY MEASURES: SPECIAL DOCUMENT PAPER, INK SCREENS, WATERMARK, BACKGROUND DESIGNS, HOLOGRAM AND OTHER SECURITY FEATURES NOT LISTED AND DO EXCEED DOCUMENT SECURITY INDUSTRY GUIDELINE

December 17, 2024	GI Report No. LG569407249	JUST CORNERED RECT. MODIFIED BRILLIANT
1.71 X 1.71 X 4.37 MM	Carat Weight	2.01 CARATS
	Color Grade	F
	Clarity Grade	VS 1
	Depth	70.6%
	Table	65%
	Grade	Medium
	Color	Patched
	Symmetry	EXCELLENT
	Fluorescence	EXCELLENT
	Inscriptions(s)	NONE
		18K LG569407249

Comments: Emerald Green Diamond was created by Chemical Vapor Deposition (CVD) growth process.

Type IIG