

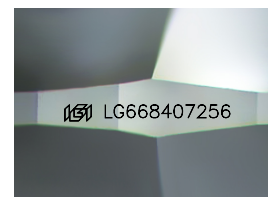
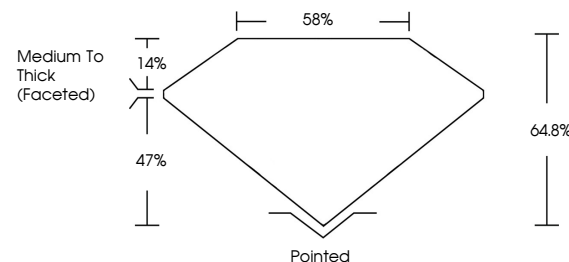


**ELECTRONIC COPY**

## LABORATORY GROWN DIAMOND REPORT

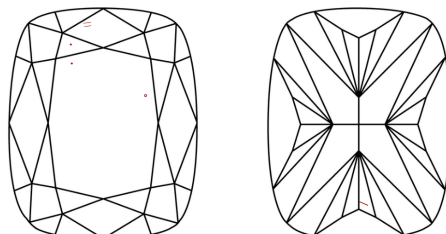
LG668407256  
Report verification at [igi.org](https://igi.org)

## PROPORTIONS



Sample Image Used

## CLARITY CHARACTERISTICS



## KEY TO SYMBOLS

Red symbols indicate internal characteristics.  
Green symbols indicate external characteristics.

## COLOR

D E F G H I J Faint Very Light Light

## CLARITY

IF      VWS<sup>1-2</sup>      VS<sup>1-2</sup>      SI<sup>1-2</sup>      I<sup>1-3</sup>

Internally Flawless	Very Very Slightly Included	Very Slightly Included	Slightly Included	Included
------------------------	--------------------------------	---------------------------	----------------------	----------

## LABORATORY GROWN DIAMOND REPORT



December 17, 2024

IGI Report Number LG668407256

Description **LABORATORY GROWN DIAMOND**

Shape and Cutting Style **CUSHION MODIFIED  
BRILLIANT**

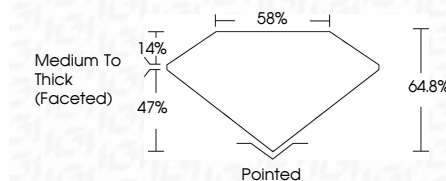
Measurements **8.76 X 6.81 X 4.41 MM**

## GRADING RESULTS

Carat Weight 2.02 CARATS

Color Grade

Clarity Grade VS 1



### ADDITIONAL GRADING INFORMATION

Polish EXCELLENT

Symmetry VERY GOODFluorescence NONEInscription(s)  LG668407256

Comments: This Laboratory Grown Diamond was created by Chemical Vapor Deposition (CVD) growth process.  
Type IIa



© IGI 2020, International Gemological Institute

FD - 10 20

**www.igi.org**

THIS DOCUMENT WAS PRODUCED WITH THE FOLLOWING SECURITY MEASURES: SPECIAL DOCUMENT PAPER, INK SCREENS, WATERMARK BACKGROUND DESIGNS, HOLOGRAM AND OTHER SECURITY FEATURES NOT LISTED AND DO EXCEED DOCUMENT SECURITY INDUSTRY GUIDELINES

December 17, 2024	2.02 CARATS
GI Report No. LG568407256	VS 1
CUSHION MODIFIED BRILLIANT	64.9%
	89%
	Medium to Thick (Feathered)
	Pointed
	B/C ELLENT
	VERY GOOD
	NONE
	1691 LG568407256

Comments:

The Laboratory Grown Diamond was  
 synthesized using the Chemical Vapor Deposition  
 (CVD) growth process.

Type IIG