



ELECTRONIC COPY

LABORATORY GROWN DIAMOND REPORT

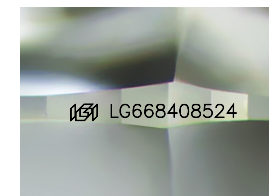
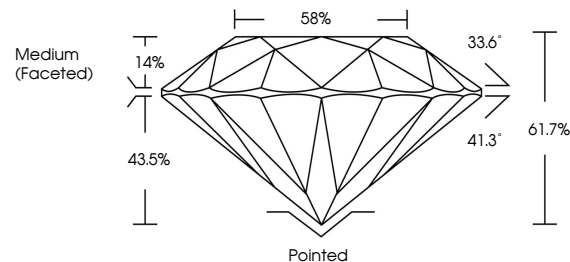
December 19, 2024
IGI Report Number LG668408524
Description LABORATORY GROWN DIAMOND
Shape and Cutting Style ROUND BRILLIANT
Measurements 7.60 - 7.63 X 4.69 MM
GRADING RESULTS
Carat Weight 1.68 CARAT
Color Grade FANCY INTENSE PINK
Clarity Grade VS 2
Cut Grade IDEAL

ADDITIONAL GRADING INFORMATION

Polish EXCELLENT
Symmetry EXCELLENT
Fluorescence STRONG
Inscription(s) IGI LG668408524

Comments: This Laboratory Grown Diamond was created by Chemical Vapor Deposition (CVD) growth process. Indications of post-growth treatment.

PROPORTIONS



Sample Image Used

COLOR

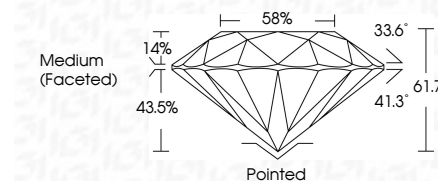
D E F G H I J Faint Very Light Light

CLARITY

IF VS 1-2 VS 1-2 SI 1-2 I 1-3
Internally Flawless Very Very Slightly Included Very Slightly Included Slightly Included Included



December 19, 2024
IGI Report Number LG668408524
Description LABORATORY GROWN DIAMOND
Shape and Cutting Style ROUND BRILLIANT
Measurements 7.60 - 7.63 X 4.69 MM
GRADING RESULTS
Carat Weight 1.68 CARAT
Color Grade FANCY INTENSE PINK
Clarity Grade VS 2
Cut Grade IDEAL



ADDITIONAL GRADING INFORMATION

Polish EXCELLENT
Symmetry EXCELLENT
Fluorescence STRONG
Inscription(s) IGI LG668408524
Comments: This Laboratory Grown Diamond was created by Chemical Vapor Deposition (CVD) growth process. Indications of post-growth treatment.



December 19, 2024
IGI Report No LG668408524
ROUND BRILLIANT
7.60 - 7.63 X 4.69 MM
1.68 CARAT
FANCY INTENSE PINK
VS 2
IDEAL
61.7%
58%
Medium (Faceted)
Pointed
EXCELLENT
EXCELLENT
STRONG
IGI LG668408524
Comments: This Laboratory Grown Diamond was created by Chemical Vapor Deposition (CVD) growth process. Indications of post-growth treatment.