



**INTERNATIONAL
GEMOLOGICAL
INSTITUTE**

ELECTRONIC COPY

LG668408881
Report verification at igi.org

LABORATORY GROWN DIAMOND REPORT



January 27, 2025

IGI Report Number **LG668408881**

Description	LABORATORY GROWN DIAMOND
-------------	--------------------------

Shape and Cutting Style **ROUND BRILLIANT**

Measurements 7.67 - 7.72 X 4.86 MM

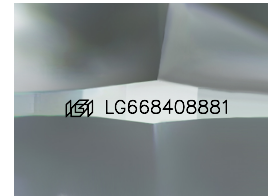
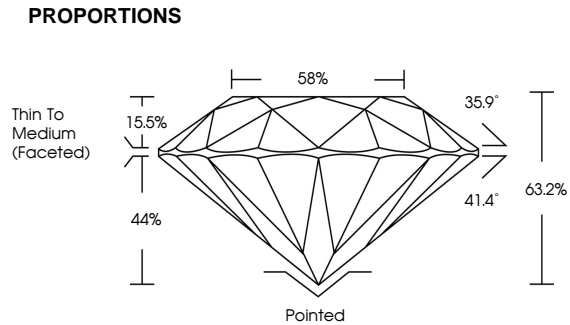
GRADING RESULTS

Carat Weight **1.77 CARAT**

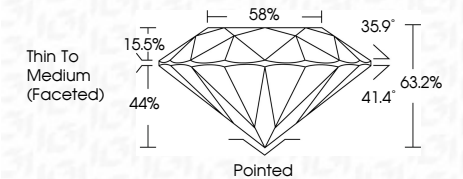
Color Grade D

Clarity Grade **VVS 2**

Cut Grade **EXCELLENT**



Sample Image Used



COLOR

D E F G H I J Faint Very Light Light

CLARITY

IF WS¹⁻² VS¹⁻² SI¹⁻² I¹⁻

Internally Flawless	Very Very Slightly Included	Very Slightly Included	Slightly Included	Included
------------------------	--------------------------------	---------------------------	----------------------	----------

ADDITIONAL GRADING INFORMATION

Polish **EXCELLENT**Symmetry **EXCELLENT**Fluorescence **NONE**Inscription(s)  LG668408881

Comments: This Laboratory Grown Diamond was created by Chemical Vapor Deposition (CVD) growth process.
Type IIa



IGI



© IGI 2020, International Gemological Institute

FD - 10 20



THIS DOCUMENT WAS PRODUCED WITH THE FOLLOWING SECURITY MEASURES: SPECIAL DOCUMENT PAPER, INK SCREENS, WATERMARK, BACKGROUND DESIGNS, HOLOGRAM, AND OTHER SECURITY FEATURES NOT LISTED AND DO EXCEED DOCUMENT SECURITY INDUSTRY GUIDELINES

www.igi.org

January 27, 2025
IGI Report No LG668408881
ROUND BRILLIANT

1.77	7 - 7.75 X 4.85 MM	Carat Weight	1.77 CARAT
		Color Grade	D
		Clarity Grade	VVS 2
		Cut Grade	EXCELLENT
		Depth	63.2%
		Table	58%
		Grade	Thin To Medium (graded)
		Claret	Polished
		Patch	EXCELLENT
		Symmetry	EXCELLENT
		Fluorescence	NONE
		Inscriptions	101 LG65-00881

Comments:
This Laboratory Grown Diamond was created by Chemical Vapor Deposition (CVD) growth process.
Type IIa