

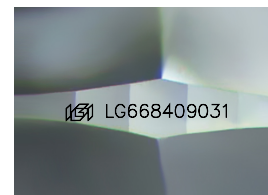
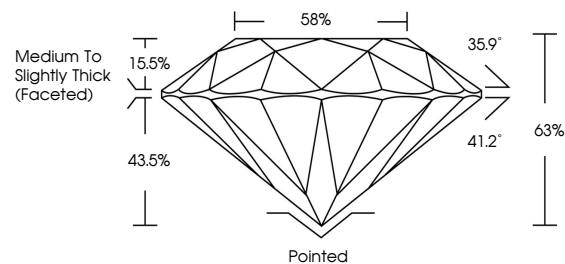


ELECTRONIC COPY

LABORATORY GROWN DIAMOND REPORT

LG668409031
Report verification at igi.org

PROPORTIONS



Sample Image Used

COLOR

D E F G H I J Faint Very Light Light

CLARITY

IF	VVS ¹⁻²	VS ¹⁻²	SI ¹⁻²	I ¹⁻³
Internally Flawless	Very Very Slightly Included	Very Slightly Included	Slightly Included	Included



© IGI 2020, International Gemological Institute

FD - 10 20

www.igi.org

LABORATORY GROWN DIAMOND REPORT



January 29, 2025

IGI Report Number **LG668409031**

Description	LABORATORY GROWN DIAMOND
-------------	--------------------------

Shape and Cutting Style **ROUND BRILLIANT**

Measurements 6.73 - 6.76 X 4.25 MM

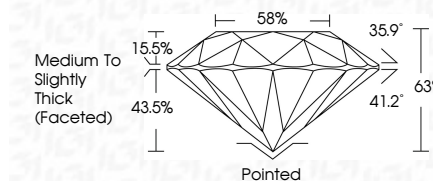
GRADING RESULTS

Carat Weight 1.21 CARAT

Color Grade

Clarity Grade WS 2

Cut Grade **EXCELLENT**



ADDITIONAL GRADING INFORMATION

Polish EXCELLENT

Symmetry **EXCELLENT**Fluorescence **NONE**Inscription(s) LG668409031

Comments: This Laboratory Grown Diamond was created by Chemical Vapor Deposition (CVD) growth process.
Type IIa



January 29, 2025	
GJ Report No G669dP031	
ROUND BRILLIANT	
Wt 7.3 - 7.6 X 4.25 MM	
Carat Weight	1.21 CARAT
Color Grade	D
Clarity Grade	VVS 2
Cut Grade	EXCELLENT
Depth	65%
Table	58%
Girdle	Medium To Slightly Thick (Featured)
Culet	Poished
Polish	EXCELLENT
Symmetry	EXCELLENT
Fluorescence	NONE
Description(s)	#61 G669dP031
Comments:	This Laboratory Grown Diamond was created by Chemical Vapor Deposition (CVD) growth process.
Type IIA	