



**ELECTRONIC COPY**

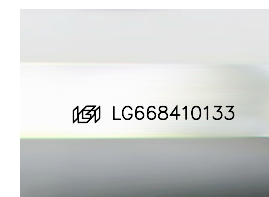
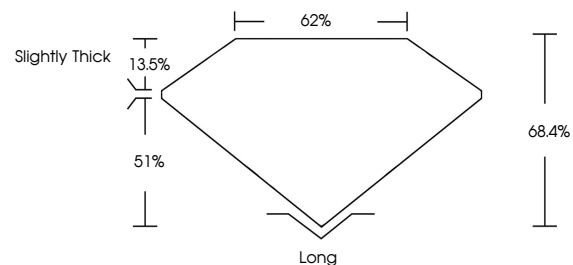
LG668410133  
Report verification at [igi.org](http://igi.org)



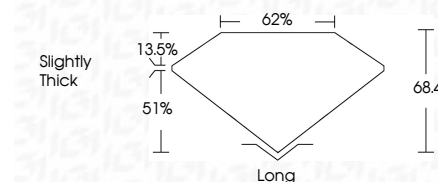
February 17, 2025  
IGI Report Number **LG668410133**  
Description **LABORATORY GROWN DIAMOND**  
Shape and Cutting Style **EMERALD CUT**  
Measurements **7.97 X 5.00 X 3.42 MM**  
**GRADING RESULTS**  
Carat Weight **1.33 CARAT**  
Color Grade **F**  
Clarity Grade **VVS 1**

February 17, 2025  
IGI Report Number **LG668410133**  
Description **LABORATORY GROWN DIAMOND**  
Shape and Cutting Style **EMERALD CUT**  
Measurements **7.97 X 5.00 X 3.42 MM**  
**GRADING RESULTS**  
Carat Weight **1.33 CARAT**  
Color Grade **F**  
Clarity Grade **VVS 1**

**PROPORTIONS**



Sample Image Used



**ADDITIONAL GRADING INFORMATION**

Polish **EXCELLENT**  
Symmetry **EXCELLENT**  
Fluorescence **NONE**  
Inscription(s) **IGI LG668410133**

Comments: This Laboratory Grown Diamond was created by Chemical Vapor Deposition (CVD) growth process.  
Type IIa

**ADDITIONAL GRADING INFORMATION**

Polish **EXCELLENT**  
Symmetry **EXCELLENT**  
Fluorescence **NONE**  
Inscription(s) **IGI LG668410133**  
Comments: This Laboratory Grown Diamond was created by Chemical Vapor Deposition (CVD) growth process.  
Type IIa

**COLOR**

D E F G H I J Faint Very Light Light

**CLARITY**

| IF                  | VS <sup>1-2</sup>           | VS <sup>1-2</sup>      | SI <sup>1-2</sup> | I <sup>1-3</sup> |
|---------------------|-----------------------------|------------------------|-------------------|------------------|
| Internally Flawless | Very Very Slightly Included | Very Slightly Included | Slightly Included | Included         |



**IGI**



February 17, 2025  
IGI Report No **LG668410133**  
**EMERALD CUT**  
**1.33 CARAT**  
Color Grade **F**  
Clarity Grade **VVS 1**  
Depth **68.4%**  
Table **62%**  
Girdle **Slightly Thick**  
Culet **Long**  
Polish **EXCELLENT**  
Symmetry **EXCELLENT**  
Fluorescence **NONE**  
Inscription(s) **IGI LG668410133**  
Comments: This Laboratory Grown Diamond was created by Chemical Vapor Deposition (CVD) growth process.  
Type IIa