

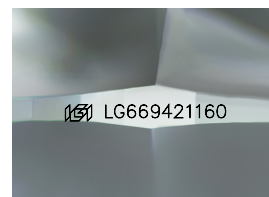
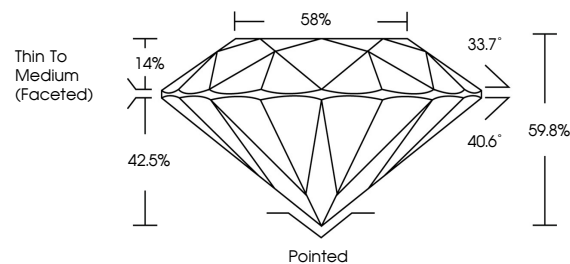


ELECTRONIC COPY

LABORATORY GROWN DIAMOND REPORT

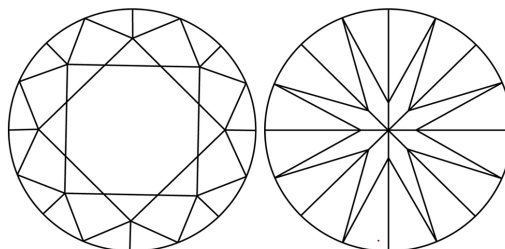
LG669421160
Report verification at igi.org

PROPORTIONS



Sample Image Used

CLARITY CHARACTERISTICS



KEY TO SYMBOLS

Red symbols indicate internal characteristics.
Green symbols indicate external characteristics.

COLOR

D E F G H I J Faint Very Light Light

CLARITY

IF WS¹⁻² VS¹⁻² SI¹⁻² |¹⁻³

Internally Flawless	Very Very Slightly Included	Very Slightly Included	Slightly Included	Included
------------------------	--------------------------------	---------------------------	----------------------	----------

LABORATORY GROWN DIAMOND REPORT



April 3, 2025

IGI Report Number **LG669421160**

Description	LABORATORY GROWN DIAMOND
-------------	--------------------------

Shape and Cutting Style **ROUND BRILLIANT**

Measurements	6.93 - 6.98 X 4.16 MM
--------------	-----------------------

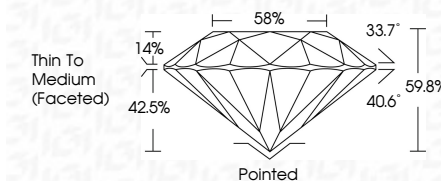
GRADING RESULTS

Carat Weight 1.22 CARAT

Color Grade E

Clarity Grade **VVS 1**

Cut Grade **IDEAL**



ADDITIONAL GRADING INFORMATION

Polish **EXCELLENT**Symmetry **EXCELLENT**Fluorescence **NONE**Inscription(s) LG669421160

Comments: As Grown - No indication of post-growth treatment.

This Laboratory Grown Diamond was created by High Pressure High Temperature (HPHT) growth process.
Type II



© IGI 2020, International Gemological Institute

FD - 10 20

www.igi.org

THIS DOCUMENT WAS PRODUCED WITH THE FOLLOWING SECURITY MEASURES: SPECIAL DOCUMENT PAPER, INK SCREENS, WATERMARK BACKGROUND DESIGNS, HOLOGRAM AND OTHER SECURITY FEATURES NOT LISTED AND DO EXCEED DOCUMENT SECURITY INDUSTRY GUIDELINES

April 3, 2025	IGI Report No. LG569421160	1.22 CARAT	E
ROUND BRILLIANT			VVS 1
			IDEAL
			50-60
			85%
		Thin To Medium	(Faceted)
		Pointed	
		EXCELLENT	
		EXCELLENT	
		NONE	
		68%	LG569421160
		Comments:	
		As Grown - No indication of post-growth treatment.	
		This Laboratory Grown Diamond was created by High Pressure High Temperature (HPHT) growth process.	
		Type II	