



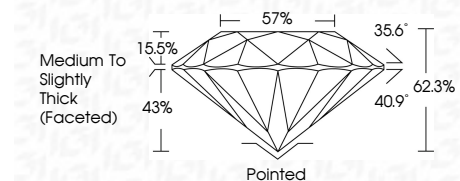
ELECTRONIC COPY

LG669421344 Report verification at igi.org



April 5, 2025 IGI Report Number LG669421344 Description LABORATORY GROWN DIAMOND Shape and Cutting Style ROUND BRILLIANT Measurements 6.95 - 6.99 X 4.34 MM

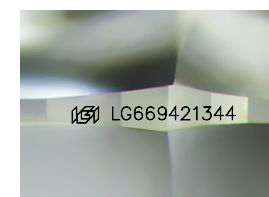
GRADING RESULTS Carat Weight 1.29 CARAT Color Grade F Clarity Grade VVS 2 Cut Grade IDEAL



ADDITIONAL GRADING INFORMATION Polish EXCELLENT Symmetry EXCELLENT Fluorescence NONE Inscription(s) IGI LG669421344 Comments: As Grown - No indication of post-growth treatment. This Laboratory Grown Diamond was created by High Pressure High Temperature (HPHT) growth process. Type II

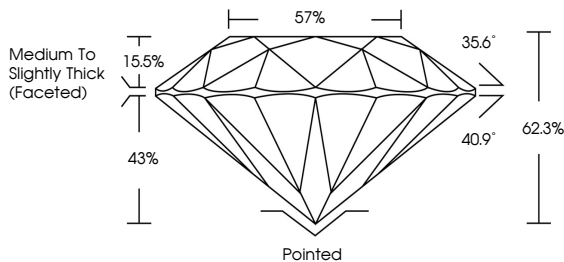


April 5, 2025 IGI Report No LG669421344 ROUND BRILLIANT 6.95 - 6.99 X 4.34 MM 1.29 CARAT F VVS 2 IDEAL 62.3% 57% Medium To Slightly Thick (Faceted) Pointed EXCELLENT EXCELLENT NONE IGI LG669421344 Comments: As Grown - No indication of post-growth treatment. This Laboratory Grown Diamond was created by High Pressure High Temperature (HPHT) growth process. Type II

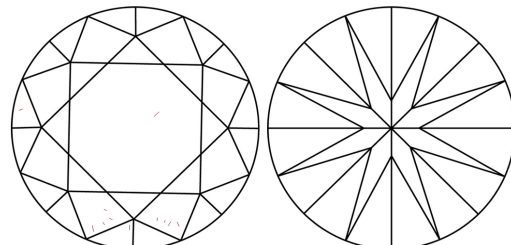


Sample Image Used

PROPORTIONS



CLARITY CHARACTERISTICS



KEY TO SYMBOLS Red symbols indicate internal characteristics. Green symbols indicate external characteristics.

COLOR

Color scale table with categories D, E, F, G, H, I, J, Faint, Very Light, Light

CLARITY

Clarity scale table with categories IF, VS 1-2, VVS 1-2, SI 1-2, I 1-3, Internally Flawless, Very Very Slightly Included, Very Slightly Included, Slightly Included, Included

April 5, 2025 IGI Report Number LG669421344 Description LABORATORY GROWN DIAMOND Shape and Cutting Style ROUND BRILLIANT Measurements 6.95 - 6.99 X 4.34 MM

GRADING RESULTS Carat Weight 1.29 CARAT Color Grade F Clarity Grade VVS 2 Cut Grade IDEAL

ADDITIONAL GRADING INFORMATION Polish EXCELLENT Symmetry EXCELLENT Fluorescence NONE Inscription(s) IGI LG669421344

Comments: As Grown - No indication of post-growth treatment. This Laboratory Grown Diamond was created by High Pressure High Temperature (HPHT) growth process. Type II

