



**ELECTRONIC COPY**

LG669483845  
Report verification at igi.org



December 17, 2024

IGI Report Number **LG669483845**

Description **LABORATORY GROWN DIAMOND**

Shape and Cutting Style **CUT CORNERED  
RECTANGULAR MODIFIED  
BRILLIANT**

Measurements **9.54 X 6.72 X 4.40 MM**

**GRADING RESULTS**

Carat Weight **2.50 CARATS**

Color Grade **D**

Clarity Grade **VS 1**

December 17, 2024  
IGI Report Number **LG669483845**  
Description **LABORATORY GROWN DIAMOND**  
Shape and Cutting Style **CUT CORNERED RECTANGULAR  
MODIFIED BRILLIANT**  
Measurements **9.54 X 6.72 X 4.40 MM**

**GRADING RESULTS**

Carat Weight **2.50 CARATS**

Color Grade **D**

Clarity Grade **VS 1**

**ADDITIONAL GRADING INFORMATION**

Polish **EXCELLENT**

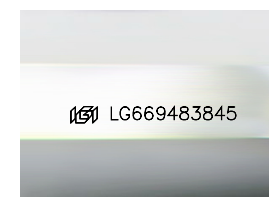
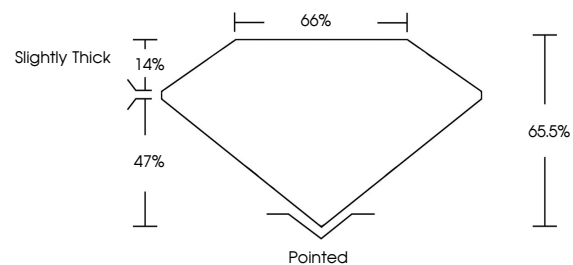
Symmetry **EXCELLENT**

Fluorescence **NONE**

Inscription(s) **IGI LG669483845**

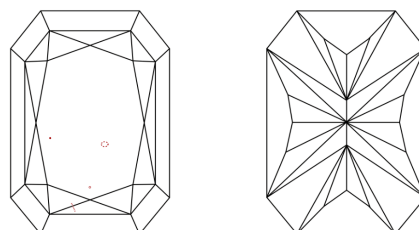
Comments: This Laboratory Grown Diamond was created by Chemical Vapor Deposition (CVD) growth process.  
Type IIa

**PROPORTIONS**



Sample Image Used

**CLARITY CHARACTERISTICS**



**KEY TO SYMBOLS**

Red symbols indicate internal characteristics.  
Green symbols indicate external characteristics.

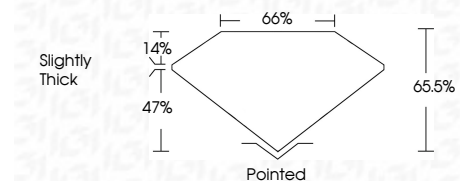
**COLOR**

D E F G H I J Faint Very Light Light

**CLARITY**

IF WS<sup>1-2</sup> VS<sup>1-2</sup> SI<sup>1-2</sup> I<sup>1-3</sup>

Internally Flawless Very Very Slightly Included Very Slightly Included Slightly Included Included



**ADDITIONAL GRADING INFORMATION**

Polish **EXCELLENT**

Symmetry **EXCELLENT**

Fluorescence **NONE**

Inscription(s) **IGI LG669483845**

Comments: This Laboratory Grown Diamond was created by Chemical Vapor Deposition (CVD) growth process.  
Type IIa



**IGI**



December 17, 2024  
IGI Report No. LG669483845  
CUT CORNERED RECT. MODIFIED BRILLIANT  
9.54 X 6.72 X 4.40 MM  
2.50 CARATS  
D  
Color Grade  
Clarity Grade VS 1  
Table 65.5%  
Girdle 65%  
Slightly Thick  
Pointed  
Polish EXCELLENT  
Symmetry EXCELLENT  
Fluorescence NONE  
Inscription(s) IGI LG669483845  
Comments: This Laboratory Grown Diamond was created by Chemical Vapor Deposition (CVD) growth process.  
Type IIa