



**ELECTRONIC COPY**

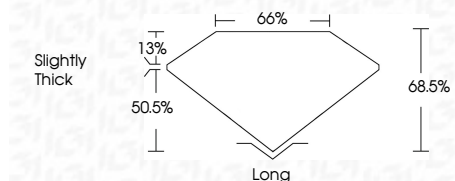
LG670423408  
Report verification at igi.org



December 19, 2024  
IGI Report Number **LG670423408**  
Description **LABORATORY GROWN DIAMOND**  
Shape and Cutting Style **TWELVE SIDED STEP CUT**  
Measurements **11.73 X 6.93 X 4.75 MM**

**GRADING RESULTS**

Carat Weight **4.21 CARATS**  
Color Grade **E**  
Clarity Grade **VVS 1**



**ADDITIONAL GRADING INFORMATION**

Polish **EXCELLENT**  
Symmetry **EXCELLENT**  
Fluorescence **NONE**  
Inscription(s) **(IGI) LG670423408**  
Comments: This Laboratory Grown Diamond was created by Chemical Vapor Deposition (CVD) growth process. Type IIa



December 19, 2024  
IGI Report No LG670423408  
**TWELVE SIDED STEP CUT**  
11.73 X 6.93 X 4.75 MM  
4.21 CARATS  
E  
VVS 1  
50.5%  
68.5%  
Slightly Thick  
Long  
EXCELLENT  
EXCELLENT  
NONE  
(IGI) LG670423408  
Comments: This Laboratory Grown Diamond was created by Chemical Vapor Deposition (CVD) growth process. Type IIa

**LABORATORY GROWN DIAMOND REPORT**

December 19, 2024  
IGI Report Number **LG670423408**  
Description **LABORATORY GROWN DIAMOND**  
Shape and Cutting Style **TWELVE SIDED STEP CUT**  
Measurements **11.73 X 6.93 X 4.75 MM**

**GRADING RESULTS**

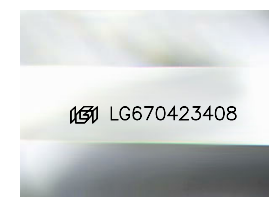
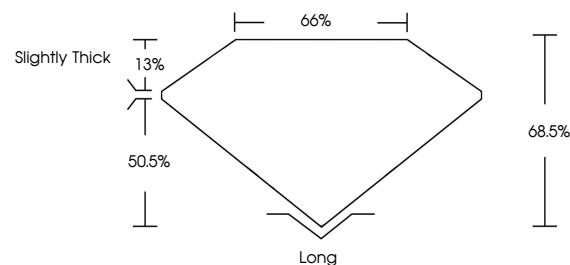
Carat Weight **4.21 CARATS**  
Color Grade **E**  
Clarity Grade **VVS 1**

**ADDITIONAL GRADING INFORMATION**

Polish **EXCELLENT**  
Symmetry **EXCELLENT**  
Fluorescence **NONE**  
Inscription(s) **(IGI) LG670423408**

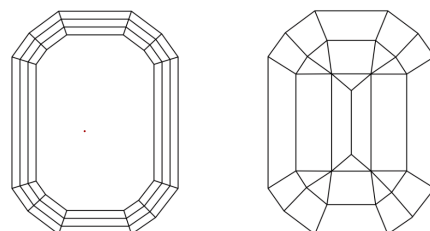
Comments: This Laboratory Grown Diamond was created by Chemical Vapor Deposition (CVD) growth process. Type IIa

**PROPORTIONS**



Sample Image Used

**CLARITY CHARACTERISTICS**



**KEY TO SYMBOLS**

Red symbols indicate internal characteristics.  
Green symbols indicate external characteristics.

**COLOR**

D E F G H I J Faint Very Light Light

**CLARITY**

IF	VS <sup>1-2</sup>	VS <sup>1-2</sup>	SI <sup>1-2</sup>	I <sup>1-3</sup>
Internally Flawless	Very Very Slightly Included	Very Slightly Included	Slightly Included	Included

