



ELECTRONIC COPY

LG670448151
Report verification at igi.org



December 28, 2024

IGI Report Number **LG670448151**

Description **LABORATORY GROWN DIAMOND**

Shape and Cutting Style **SQUARE CUSHION BRILLIANT**

Measurements **5.74 X 5.54 X 3.69 MM**

GRADING RESULTS

Carat Weight **1.03 CARAT**

Color Grade **FANCY INTENSE YELLOW**

Clarity Grade **VVS 2**

December 28, 2024
IGI Report Number **LG670448151**
Description **LABORATORY GROWN DIAMOND**
Shape and Cutting Style **SQUARE CUSHION BRILLIANT**
Measurements **5.74 X 5.54 X 3.69 MM**

GRADING RESULTS

Carat Weight **1.03 CARAT**

Color Grade **FANCY INTENSE YELLOW**

Clarity Grade **VVS 2**

ADDITIONAL GRADING INFORMATION

Polish **EXCELLENT**

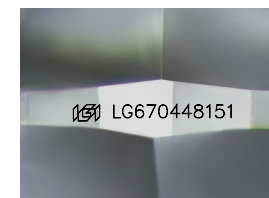
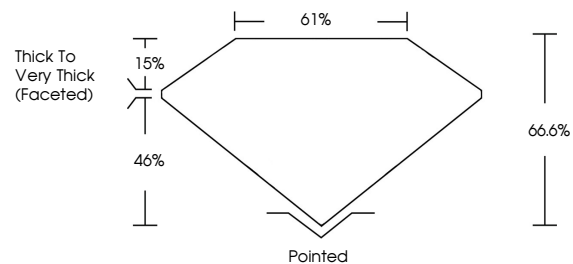
Symmetry **EXCELLENT**

Fluorescence **NONE**

Inscription(s) **IGI LG670448151**

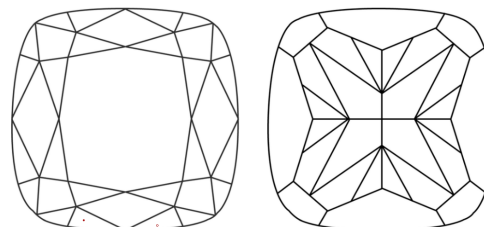
Comments: This Laboratory Grown Diamond was created by Chemical Vapor Deposition (CVD) growth process.

PROPORTIONS



Sample Image Used

CLARITY CHARACTERISTICS



KEY TO SYMBOLS

Red symbols indicate internal characteristics.
Green symbols indicate external characteristics.

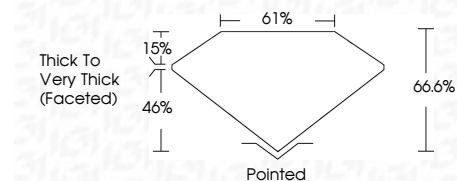
COLOR

D E F G H I J Faint Very Light Light

CLARITY

IF VS¹⁻² VS¹⁻² SI¹⁻² I¹⁻³

Internally Flawless Very Very Slightly Included Very Slightly Included Slightly Included Included



ADDITIONAL GRADING INFORMATION

Polish **EXCELLENT**

Symmetry **EXCELLENT**

Fluorescence **NONE**

Inscription(s) **IGI LG670448151**

Comments: This Laboratory Grown Diamond was created by Chemical Vapor Deposition (CVD) growth process.



IGI



December 28, 2024
IGI Report No LG670448151
SQUARE CUSHION BRILLIANT
5.74 X 5.54 X 3.69 MM
1.03 CARAT
FANCY INTENSE YELLOW
VVS 2
66.6%
61%
Thick to Very Thick (Faceted)
Pointed
EXCELLENT
EXCELLENT
NONE
IGI LG670448151
Comments: This Laboratory Grown Diamond was created by Chemical Vapor Deposition (CVD) growth process.