



**ELECTRONIC COPY**

## LABORATORY GROWN DIAMOND REPORT

|                         |                          |
|-------------------------|--------------------------|
| February 21, 2025       |                          |
| IGI Report Number       | LG671456041              |
| Description             | LABORATORY GROWN DIAMOND |
| Shape and Cutting Style | ROUND BRILLIANT          |
| Measurements            | 8.35 - 8.42 X 5.15 MM    |

## GRADING RESULTS

|               |             |
|---------------|-------------|
| Carat Weight  | 2.22 CARATS |
| Color Grade   | F           |
| Clarity Grade | VS 2        |
| Cut Grade     | IDEAL       |

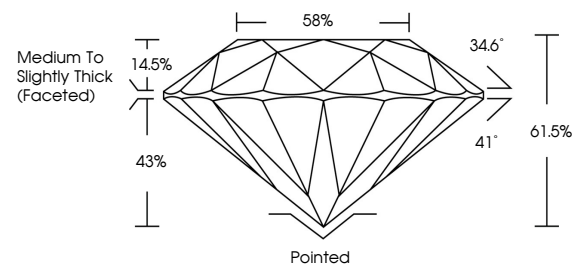
### ADDITIONAL GRADING INFORMATION

|                |                |
|----------------|----------------|
| Polish         | EXCELLENT      |
| Symmetry       | EXCELLENT      |
| Fluorescence   | NONE           |
| Inscription(s) | 15 LG671456041 |

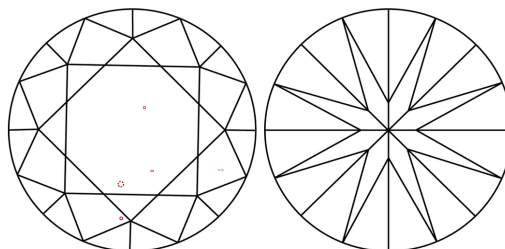
Comments: This Laboratory Grown Diamond was created by Chemical Vapor Deposition (CVD) growth process.  
Type IIa

LG671456041  
Report verification at [igi.org](https://igi.org)

## PROPORTIONS

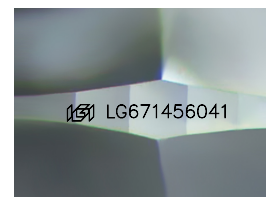


## CLARITY CHARACTERISTICS



### KEY TO SYMBOLS

Red symbols indicate internal characteristics.  
Green symbols indicate external characteristics.



Sample Image Used

## COLOR

D E F G H I J Faint Very Light Light

## CLARITY

IF WS<sup>1-2</sup> VS<sup>1-2</sup> SI<sup>1-2</sup> |<sup>1-3</sup>

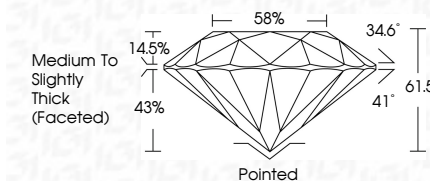
| Internally<br>Flawless | Very Very<br>Slightly Included | Very<br>Slightly Included | Slightly<br>Included | Included |
|------------------------|--------------------------------|---------------------------|----------------------|----------|
|------------------------|--------------------------------|---------------------------|----------------------|----------|



|                         |                          |
|-------------------------|--------------------------|
| February 21, 2025       |                          |
| IGI Report Number       | LG671456041              |
| Description             | LABORATORY GROWN DIAMOND |
| Shape and Cutting Style | ROUND BRILLIANT          |
| Measurements            | 8.35 - 8.42 X 5.15 MM    |

## GRADING RESULTS

|               |             |
|---------------|-------------|
| Carat Weight  | 2.22 CARATS |
| Color Grade   | F           |
| Clarity Grade | VS 2        |
| Cut Grade     | IDEAL       |



### ADDITIONAL GRADING INFORMATION

|   |                             |
|---|-----------------------------|
| Polish  | EXCELLENT                   |
| Symmetry  | EXCELLENT                   |
| Fluorescence  | NONE                        |
| Inscription(s)  | <del>(LS)</del> LG671456041 |
| <p>Comments: This Laboratory Grown Diamond was created by Chemical Vapor Deposition (CVD) growth process.</p> <p>Type IIa</p> |                             |



© IGI 2020, International Gemological Institute

FD - 10 20

**www.igi.org**



THIS DOCUMENT WAS PRODUCED WITH THE FOLLOWING SECURITY MEASURES: SPECIAL DOCUMENT PAPER, INK SCREENS, WATERMARK, BACKGROUND DESIGNS, HOLOGRAM AND OTHER SECURITY FEATURES NOT LISTED AND DO EXCEED DOCUMENT SECURITY INDUSTRY GUIDELINE

February 21, 2025  
GI Report No LG671456041

|                 |                       |             |                                   |           |      |
|-----------------|-----------------------|-------------|-----------------------------------|-----------|------|
| ROUND BRILLIANT | 3.35 - 4.42 x 5.15 MM | 2.22 CARATS | VS 2                              | Polished  | None |
|                 | Carat Weight          |             | IDEAL                             | EXCELLENT |      |
|                 | Color Grade           | F           | 61.5%                             | EXCELLENT |      |
|                 | Clarity Grade         |             | 58%                               |           |      |
|                 | Cut Grade             |             | Medium To Slightly Thick (Fasces) |           |      |
|                 | Depth                 |             |                                   |           |      |
|                 | Table                 |             |                                   |           |      |
|                 | Girdle                |             |                                   |           |      |
|                 | Culet                 |             |                                   |           |      |
|                 | Polish                |             |                                   |           |      |
|                 | Symmetry              |             |                                   |           |      |
|                 | Fluorescence          |             |                                   |           |      |

**Comments:**  
This Laboratory Grown Diamond was  
created by Chemical Vapor Deposition  
(CVD) growth process.