



ELECTRONIC COPY

LABORATORY GROWN DIAMOND REPORT

February 24, 2025	
IGI Report Number	LG671456246
Description	LABORATORY GROWN DIAMOND
Shape and Cutting Style	ROUND BRILLIANT
Measurements	8.24 - 8.28 X 5.21 MM

GRADING RESULTS

Carat Weight	2.22 CARATS
Color Grade	E
Clarity Grade	VS 2
Cut Grade	EXCELLENT

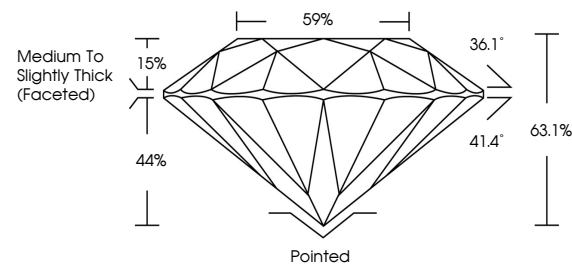
ADDITIONAL GRADING INFORMATION

Polish	EXCELLENT
Symmetry	EXCELLENT
Fluorescence	NONE
Inscription(s)	 LG671456246

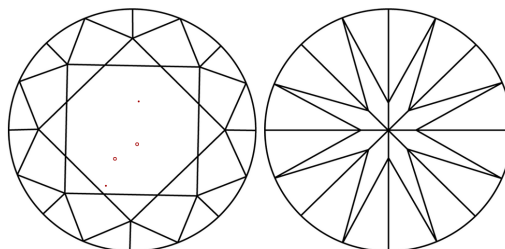
Comments: This Laboratory Grown Diamond was created by Chemical Vapor Deposition (CVD) growth process.
Type IIa

LG671456246
Report verification at igi.org

PROPORTIONS

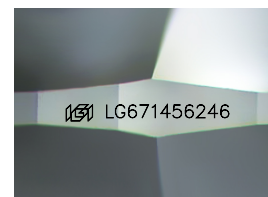


CLARITY CHARACTERISTICS



KEY TO SYMBOLS

Red symbols indicate internal characteristics.
Green symbols indicate external characteristics.



Sample Image Used

COLOR

D E F G H I J Faint Very Light Light

CLARITY

IF WS¹⁻² VS¹⁻² SI¹⁻² |¹⁻³

Internally Flawless	Very Very Slightly Included	Very Slightly Included	Slightly Included	Included
------------------------	--------------------------------	---------------------------	----------------------	----------

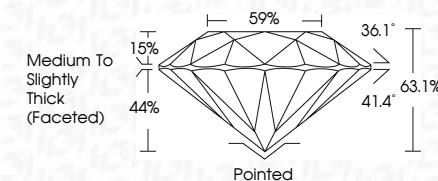
LABORATORY GROWN DIAMOND REPORT



February 24, 2025	
IGI Report Number	LG671456246
Description	LABORATORY GROWN DIAMOND
Shape and Cutting Style	ROUND BRILLIANT
Measurements	8.24 - 8.28 X 5.21 MM

GRADING RESULTS

Carat Weight	2.22 CARATS
Color Grade	E
Clarity Grade	VS 2
Cut Grade	EXCELLENT



ADDITIONAL GRADING INFORMATION

Polish	EXCELLENT
Symmetry	EXCELLENT
Fluorescence	NONE
Inscription(s)	 LG671456246
Comments: This Laboratory Grown Diamond was created by Chemical Vapor Deposition (CVD) growth process.	
Type IIa	



IG



© IGI 2020, International Gemological Institute

FD - 10 20



THIS DOCUMENT WAS PRODUCED WITH THE FOLLOWING SECURITY MEASURES: SPECIAL DOCUMENT PAPER, INK SCREENS, WATERMARK, BACKGROUND DESIGNS, HOLOGRAM, AND OTHER SECURITY FEATURES NOT LISTED AND DO EXCEED DOCUMENT SECURITY INDUSTRY GUIDELINES.

www.igi.org

February 24, 2025
IGI Report No LG671456246
ROUND BRILLIANT

8.24 - 8.28 X 5.21 MM	Carat Weight	2.22 CARATS
	Color Grade	E
	Clarity Grade	VS 2
	Cut Grade	EXCELLENT
	Depth	63.1%
	Table	59%
	Girdle	Medium to Slightly Thick (Faceted)
	Culet	Pointed
	Polish	EXCELLENT
	Symmetry	EXCELLENT
	Fluorescence	NONE
	Comments	see 12571 1652/4

Comments:
This Laboratory Grown Diamond was created by Chemical Vapor Deposition (CVD) growth process.