

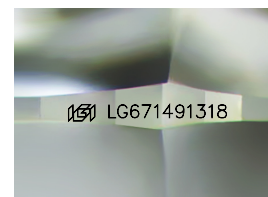
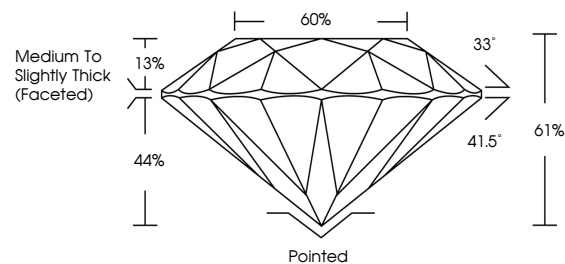


ELECTRONIC COPY

LABORATORY GROWN DIAMOND REPORT

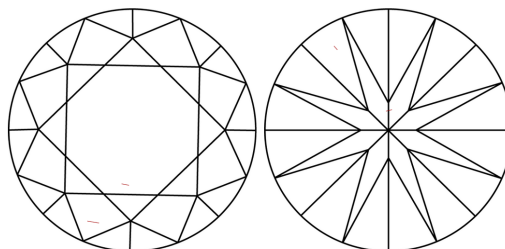
LG671491318
Report verification at [igi.org](https://www.igi.org)

PROPORTIONS



Sample Image Used

CLARITY CHARACTERISTICS



KEY TO SYMBOLS

Red symbols indicate internal characteristics.
Green symbols indicate external characteristics.

COLOR

D E F G H I J Faint Very Light Light

CLARITY

IF WS¹⁻² VS¹⁻² S¹⁻² |¹⁻³

| | | | | |
|---------------------|-----------------------------|------------------------|-------------------|----------|
| Internally Flawless | Very Very Slightly Included | Very Slightly Included | Slightly Included | Included |
|---------------------|-----------------------------|------------------------|-------------------|----------|

LABORATORY GROWN DIAMOND REPORT



January 1, 2025

IGI Report Number **LG671491318**Description **LABORATORY GROWN DIAMOND**Shape and Cutting Style **ROUND BRILLIANT**

Measurements 6.74 - 6.78 X 4.12 MM

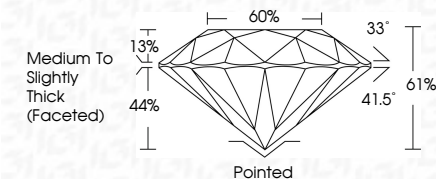
GRADING RESULTS

Carat Weight 1.15 CARAT

| | |
|-------------|---|
| Color Grade | D |
|-------------|---|

Clarity Grade VS 1

Cut Grade **IDEAL**



ADDITIONAL GRADING INFORMATION

Polish **EXCELLENT**Symmetry **EXCELLENT**Fluorescence **NONE**Inscription(s) LG671491318

Comments: As Grown - No indication of post-growth treatment.

This Laboratory Grown Diamond was created by High Pressure High Temperature (HPHT) growth process.

Type II



© IGI 2020, International Gemological Institute

FD - 10 20



THIS DOCUMENT WAS PRODUCED WITH THE FOLLOWING SECURITY MEASURES: SPECIAL DOCUMENT PAPER, INK SCREENS, WATERMARK, BACKGROUND DESIGNS, HOLOGRAM AND OTHER SECURITY FEATURES NOT LISTED AND DO EXCEED DOCUMENT SECURITY INDUSTRY GUIDELINES

www.igi.org

| | | | | | |
|--------------------------|-----------------------|-------------|----------------------------------|-------|----------------|
| January 1, 2026 | Carat Weight | Color Grade | Clarity Grade | VS 1 | Polished |
| GI Report No. LG57491318 | Color Grade | Cut Grade | Depth | IDEAL | EXCELLENT |
| ROUND BRILLIANT | 4.74 - 4.79 X 4.12 MM | Table | 61% | 65% | EXCELLENT |
| | | Girdle | Medium to Slightly Thick (Faced) | | NONE |
| | | | | | 681 LG57491318 |

Comments:
As Grown - No indication of post-growth treatment.
This Laboratory Grown Diamond was created by High Pressure High Temperature (HPHT) growth process.