



**ELECTRONIC COPY**

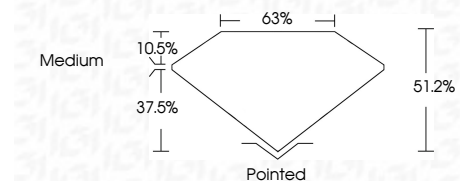
LG675512268  
Report verification at igi.org



January 9, 2025  
IGI Report Number **LG675512268**  
Description **LABORATORY GROWN DIAMOND**  
Shape and Cutting Style **MODIFIED KITE STEP CUT**  
Measurements **9.80 X 6.09 X 3.12 MM**

**GRADING RESULTS**

Carat Weight **1.03 CARAT**  
Color Grade **F**  
Clarity Grade **VS 2**



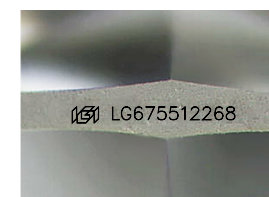
**ADDITIONAL GRADING INFORMATION**

Polish **EXCELLENT**  
Symmetry **EXCELLENT**  
Fluorescence **NONE**  
Inscription(s) **(IGI) LG675512268**  
Comments: This Laboratory Grown Diamond was created by Chemical Vapor Deposition (CVD) growth process. Type IIa



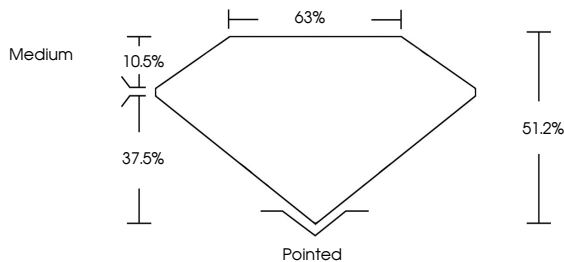
January 9, 2025  
IGI Report No LG675512268  
**MODIFIED KITE STEP CUT**  
9.80 X 6.09 X 3.12 MM  
1.03 CARAT **F**  
Color Grade **VS 2**  
Depth **51.2%**  
Table **37.5%**  
Girdle **Medium**  
Pointed  
Culet **EXCELLENT**  
Polish **EXCELLENT**  
Symmetry **EXCELLENT**  
Fluorescence **NONE**  
Inscription(s) **(IGI) LG675512268**

Comments: This Laboratory Grown Diamond was created by Chemical Vapor Deposition (CVD) growth process. Type IIa

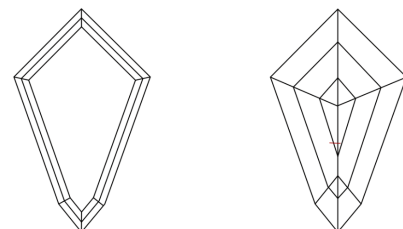


Sample Image Used

**PROPORTIONS**



**CLARITY CHARACTERISTICS**



**KEY TO SYMBOLS**

Red symbols indicate internal characteristics.  
Green symbols indicate external characteristics.

**COLOR**

D	E	F	G	H	I	J	Faint	Very Light	Light
---	---	---	---	---	---	---	-------	------------	-------

**CLARITY**

IF	VS <sup>1-2</sup>	VS <sup>1-2</sup>	SI <sup>1-2</sup>	I <sup>1-3</sup>
Internally Flawless	Very Very Slightly Included	Very Slightly Included	Slightly Included	Included

