



ELECTRONIC COPY

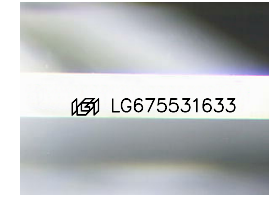
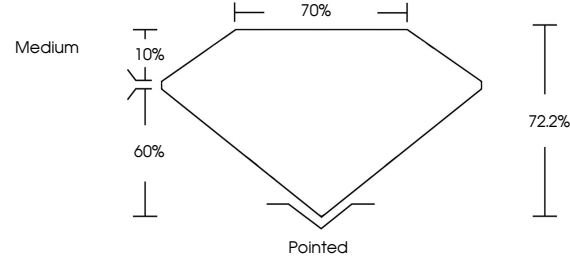


January 13, 2025
IGI Report Number **LG675531633**
Description **LABORATORY GROWN DIAMOND**
Shape and Cutting Style **PRINCESS CUT**
Measurements **11.23 X 11.20 X 8.09 MM**
GRADING RESULTS
Carat Weight **8.58 CARATS**
Color Grade **E**
Clarity Grade **VVS 2**

LABORATORY GROWN DIAMOND REPORT

January 13, 2025
IGI Report Number **LG675531633**
Description **LABORATORY GROWN DIAMOND**
Shape and Cutting Style **PRINCESS CUT**
Measurements **11.23 X 11.20 X 8.09 MM**

PROPORTIONS

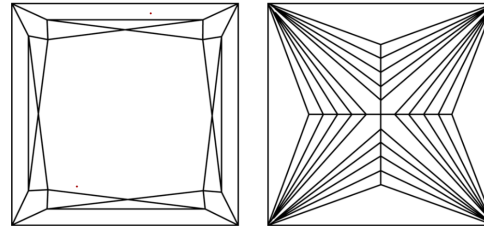


Sample Image Used

GRADING RESULTS

Carat Weight **8.58 CARATS**
Color Grade **E**
Clarity Grade **VVS 2**

CLARITY CHARACTERISTICS



ADDITIONAL GRADING INFORMATION

Polish **EXCELLENT**
Symmetry **EXCELLENT**
Fluorescence **NONE**
Inscription(s) **LG675531633**

Comments: This Laboratory Grown Diamond was created by Chemical Vapor Deposition (CVD) growth process. Type IIa

KEY TO SYMBOLS

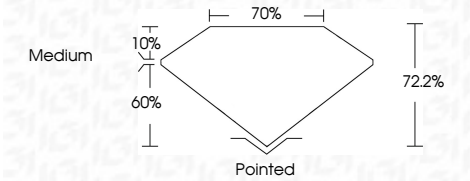
Red symbols indicate internal characteristics.
Green symbols indicate external characteristics.

COLOR

D E F G H I J Faint Very Light Light

CLARITY

IF	VS ¹⁻²	VS ¹⁻²	SI ¹⁻²	I ¹⁻³
Internally Flawless	Very Very Slightly Included	Very Slightly Included	Slightly Included	Included



ADDITIONAL GRADING INFORMATION

Polish **EXCELLENT**
Symmetry **EXCELLENT**
Fluorescence **NONE**
Inscription(s) **LG675531633**
Comments: This Laboratory Grown Diamond was created by Chemical Vapor Deposition (CVD) growth process. Type IIa



January 13, 2025
IGI Report No. **LG675531633**
PRINCESS CUT
11.23 X 11.20 X 8.09 MM
8.58 CARATS
E
VVS 2
72.2%
70%
Medium
Pointed
EXCELLENT
EXCELLENT
NONE
IGI LG675531633

Comments: This Laboratory Grown Diamond was created by Chemical Vapor Deposition (CVD) growth process. Type IIa