



**ELECTRONIC COPY**

LG676502806  
Report verification at igi.org



January 18, 2025  
IGI Report Number **LG676502806**  
Description **LABORATORY GROWN DIAMOND**  
Shape and Cutting Style **PENTAGONAL MODIFIED BRILLIANT**  
Measurements **9.97 X 14.05 X 5.27 MM**  
**GRADING RESULTS**  
Carat Weight **4.96 CARATS**  
Color Grade **E**  
Clarity Grade **VVS 2**

**LABORATORY GROWN DIAMOND REPORT**

January 18, 2025  
IGI Report Number **LG676502806**  
Description **LABORATORY GROWN DIAMOND**  
Shape and Cutting Style **PENTAGONAL MODIFIED BRILLIANT**  
Measurements **9.97 X 14.05 X 5.27 MM**

**GRADING RESULTS**

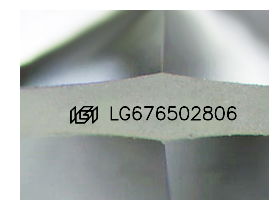
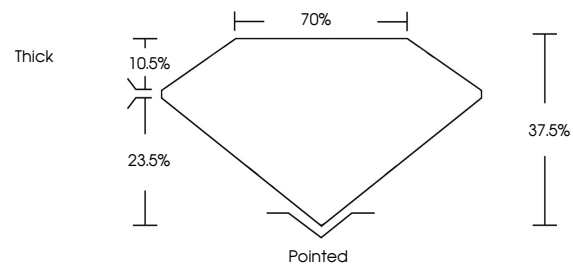
Carat Weight **4.96 CARATS**  
Color Grade **E**  
Clarity Grade **VVS 2**

**ADDITIONAL GRADING INFORMATION**

Polish **EXCELLENT**  
Symmetry **EXCELLENT**  
Fluorescence **NONE**  
Inscription(s) **IGI LG676502806**

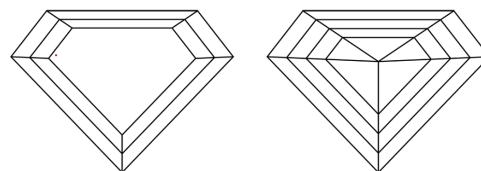
Comments: This Laboratory Grown Diamond was created by Chemical Vapor Deposition (CVD) growth process.  
Type IIa

**PROPORTIONS**



Sample Image Used

**CLARITY CHARACTERISTICS**



**KEY TO SYMBOLS**

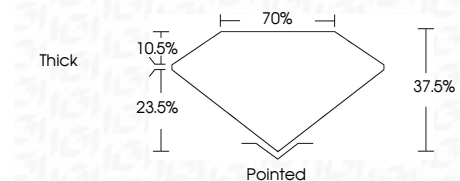
Red symbols indicate internal characteristics.  
Green symbols indicate external characteristics.

**COLOR**

D E F G H I J Faint Very Light Light

**CLARITY**

IF	VS <sup>1-2</sup>	VS <sup>1-2</sup>	SI <sup>1-2</sup>	I <sup>1-3</sup>
Internally Flawless	Very Very Slightly Included	Very Slightly Included	Slightly Included	Included



**ADDITIONAL GRADING INFORMATION**

Polish **EXCELLENT**  
Symmetry **EXCELLENT**  
Fluorescence **NONE**  
Inscription(s) **IGI LG676502806**  
Comments: This Laboratory Grown Diamond was created by Chemical Vapor Deposition (CVD) growth process.  
Type IIa



January 18, 2025  
IGI Report No LG676502806  
**PENTAGONAL MODIFIED BRILLIANT**  
4.96 CARATS E  
Carat Weight **4.96**  
Color Grade **E**  
Clarity Grade **VVS 2**  
Depth **37.05%**  
Table **70%**  
Girdle **Thick**  
Culet **Pointed**  
Polish **EXCELLENT**  
Symmetry **EXCELLENT**  
Fluorescence **NONE**  
Inscription(s) **IGI LG676502806**  
Comments: This Laboratory Grown Diamond was created by Chemical Vapor Deposition (CVD) growth process.  
Type IIa