



**ELECTRONIC COPY**

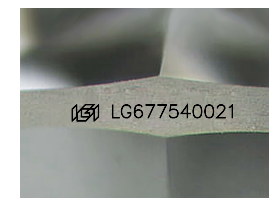
LG677540021  
Report verification at igi.org



January 25, 2025  
IGI Report Number **LG677540021**  
Description **LABORATORY GROWN DIAMOND**  
Shape and Cutting Style **PENTAGONAL STEP CUT**  
Measurements **8.26 X 6.77 X 3.89 MM**

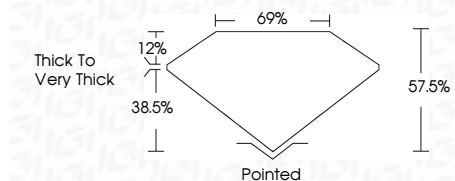
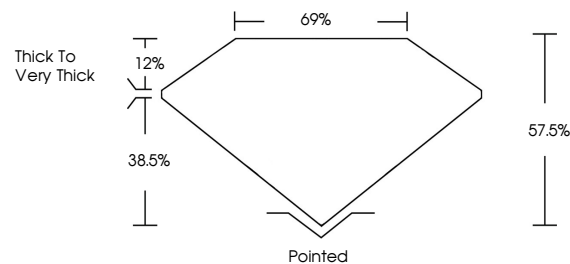
**GRADING RESULTS**

Carat Weight **1.20 CARAT**  
Color Grade **E**  
Clarity Grade **VS 1**

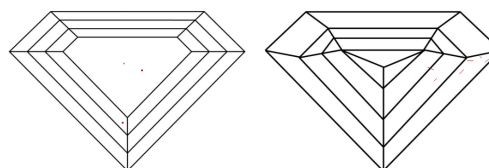


Sample Image Used

**PROPORTIONS**



**CLARITY CHARACTERISTICS**



**KEY TO SYMBOLS**

Red symbols indicate internal characteristics.  
Green symbols indicate external characteristics.

**COLOR**

D E F G H I J Faint Very Light Light

**CLARITY**

IF	WS <sup>1-2</sup>	VS <sup>1-2</sup>	SI <sup>1-2</sup>	I <sup>1-3</sup>
Internally Flawless	Very Very Slightly Included	Very Slightly Included	Slightly Included	Included

**ADDITIONAL GRADING INFORMATION**

Polish **EXCELLENT**  
Symmetry **EXCELLENT**  
Fluorescence **NONE**  
Inscription(s) **IGI LG677540021**  
Comments: This Laboratory Grown Diamond was created by Chemical Vapor Deposition (CVD) growth process.  
Type IIa



**IGI**



January 25, 2025  
IGI Report No LG677540021  
**PENTAGONAL STEP CUT**  
8.26 X 6.77 X 3.89 MM  
1.20 CARAT  
E  
Color Grade  
VS 1  
Depth 57.05%  
Table 69%  
Girdle Thick to Very Thick  
Pointed  
Culet  
Polish EXCELLENT  
Symmetry EXCELLENT  
Fluorescence NONE  
Inscription(s) IGI LG677540021  
Comments: This Laboratory Grown Diamond was created by Chemical Vapor Deposition (CVD) growth process.  
Type IIa