



ELECTRONIC COPY

LABORATORY GROWN DIAMOND REPORT

| | |
|-------------------------|----------------------------|
| January 30, 2025 | |
| IGI Report Number | LG677579808 |
| Description | LABORATORY GROWN DIAMOND |
| Shape and Cutting Style | CUSHION MODIFIED BRILLIANT |
| Measurements | 10.89 X 7.37 X 5.08 MM |

GRADING RESULTS

| | |
|---------------|------------------|
| Carat Weight | 3.77 CARATS |
| Color Grade | FANCY VIVID PINK |
| Clarity Grade | VS 1 |

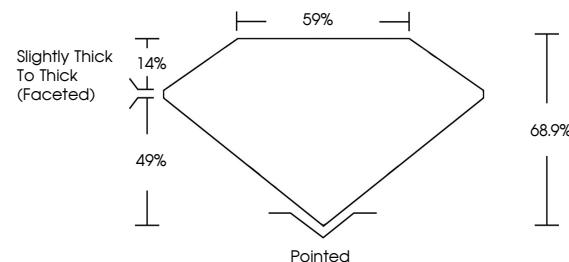
ADDITIONAL GRADING INFORMATION

| | |
|----------------|----------------|
| Polish | EXCELLENT |
| Symmetry | EXCELLENT |
| Fluorescence | SLIGHT |
| Inscription(s) | 15 LG677579808 |

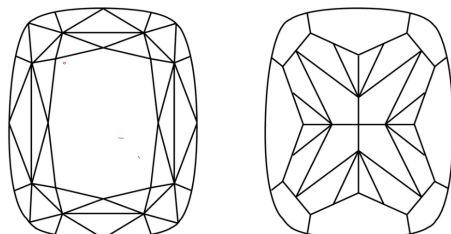
Comments: This Laboratory Grown Diamond was created by Chemical Vapor Deposition (CVD) growth process.
Indications of post-growth treatment.

LG677579808
Report verification at lgi.org

PROPORTIONS

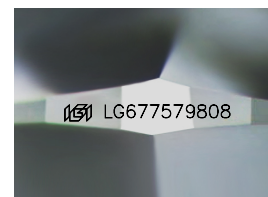


CLARITY CHARACTERISTICS



KEY TO SYMBOLS

Red symbols indicate internal characteristics.
Green symbols indicate external characteristics.



Sample Image Used

COLOR

D E F G H I J Faint Very Light Light

CLARITY

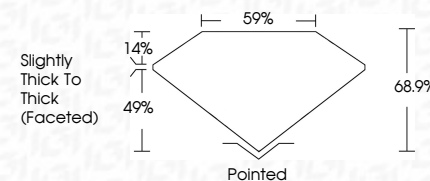
IF WS¹⁻² VS¹⁻² SI¹⁻² I¹⁻³

| Internally Flawless | Very Very Slightly Included | Very Slightly Included | Slightly Included | Included |
|------------------------|--------------------------------|---------------------------|----------------------|----------|
|------------------------|--------------------------------|---------------------------|----------------------|----------|

LABORATORY GROWN DIAMOND REPORT



| | |
|-------------------------|-------------------------------|
| January 30, 2025 | |
| IGI Report Number | LG677579808 |
| Description | LABORATORY GROWN DIAMOND |
| Shape and Cutting Style | CUSHION MODIFIED BRILLIANT |
| Measurements | 10.89 X 7.37 X 5.08 MM |
| GRADING RESULTS | |
| Carat Weight | 3.77 CARATS |
| Color Grade | FANCY VIVID PINK |
| Clarity Grade | VS 1 |



ADDITIONAL GRADING INFORMATION

| | |
|--|-----------------|
| Polish | EXCELLENT |
| Symmetry | EXCELLENT |
| Fluorescence | SLIGHT |
| Inscription(s) | (LG) LG67757980 |
| <p>Comments: This Laboratory Grown Diamond was created by Chemical Vapor Deposition (CVD) growth process.</p> <p>Indications of post-growth treatment.</p> | |



© IGI 2020, International Gemological Institute

FD - 10 20



THIS DOCUMENT WAS PRODUCED WITH THE FOLLOWING SECURITY MEASURES: SPECIAL DOCUMENT PAPER, INK SCREENS, WATERMARK, BACKGROUND DESIGNS, HOLOGRAM AND OTHER SECURITY FEATURES NOT LISTED AND DO EXCEED DOCUMENT SECURITY INDUSTRY GUIDELINE

January 30, 2025
GI Report No LG677579808
VISION MODIFIED BRILLIANT

| | | | | | | | | | | | |
|------------------------|-------------|------------------|------|-------|-----|-----------------------------------|---------|-----------|-----------|--------|----------------|
| 10.69 X 7.37 X 5.08 MM | 3.77 CARATS | FANCY VIVID RINK | VS 1 | 68.9% | 59% | Slightly Thick to Thick (faceted) | Pointed | EXCELLENT | EXCELLENT | SLIGHT | 4411 G47775999 |
| Carat Weight | | | | | | | | | | | |
| Color Grade | | | | | | | | | | | |
| Clarity Grade | | | | | | | | | | | |
| Depth | | | | | | | | | | | |
| Table | | | | | | | | | | | |
| Grade | | | | | | | | | | | |
| Culet | | | | | | | | | | | |
| Polish | | | | | | | | | | | |
| Symmetry | | | | | | | | | | | |
| Fluorescence | | | | | | | | | | | |
| Identification(s) | | | | | | | | | | | |

Comments:
This Laboratory Grown Diamond was created by Chemical Vapor Deposition (CVD) growth process.

www.igi.org