



ELECTRONIC COPY

LG677579821
Report verification at igi.org



January 30, 2025

IGI Report Number LG677579821

Description LABORATORY GROWN DIAMOND

Shape and Cutting Style CUT CORNERED RECTANGULAR MODIFIED BRILLIANT

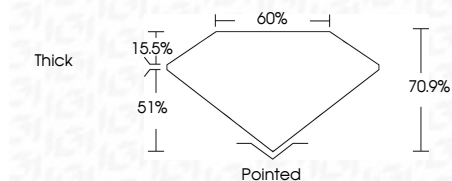
Measurements 11.34 X 7.98 X 5.66 MM

GRADING RESULTS

Carat Weight 5.05 CARATS

Color Grade FANCY VIVID PINK

Clarity Grade VVS 2



ADDITIONAL GRADING INFORMATION

Polish EXCELLENT

Symmetry EXCELLENT

Fluorescence SLIGHT

Inscription(s) LG677579821

Comments: This Laboratory Grown Diamond was created by Chemical Vapor Deposition (CVD) growth process.

Indications of post-growth treatment.

Secondary color: Brown



January 30, 2025

IGI Report Number LG677579821

Description LABORATORY GROWN DIAMOND

Shape and Cutting Style CUT CORNERED RECTANGULAR MODIFIED BRILLIANT

Measurements 11.34 X 7.98 X 5.66 MM

GRADING RESULTS

Carat Weight 5.05 CARATS

Color Grade FANCY VIVID PINK

Clarity Grade VVS 2

ADDITIONAL GRADING INFORMATION

Polish EXCELLENT

Symmetry EXCELLENT

Fluorescence SLIGHT

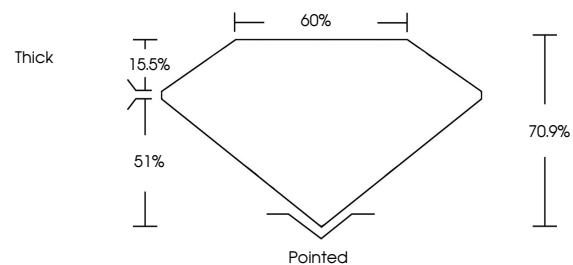
Inscription(s) LG677579821

Comments: This Laboratory Grown Diamond was created by Chemical Vapor Deposition (CVD) growth process.

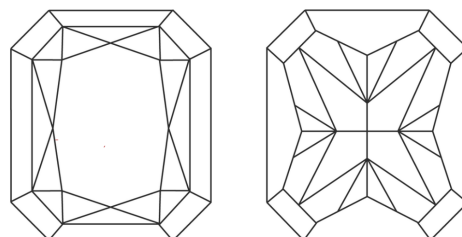
Indications of post-growth treatment.

Secondary color: Brown

PROPORTIONS

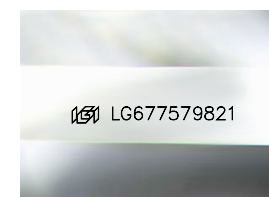


CLARITY CHARACTERISTICS



KEY TO SYMBOLS

Red symbols indicate internal characteristics. Green symbols indicate external characteristics.



Sample Image Used

COLOR

D E F G H I J Faint Very Light Light

CLARITY

IF VS 1-2 VS 1-2 SI 1-2 I 1-3

Internally Flawless Very Very Slightly Included Very Slightly Included Slightly Included Included

Summary of report details including date, report number, description, measurements, grading results, and additional information.

Comments: This Laboratory Grown Diamond was created by Chemical Vapor Deposition (CVD) growth process. Indications of post-growth treatment. Secondary color: Brown