



ELECTRONIC COPY

LG678506923
Report verification at igi.org



January 30, 2025
IGI Report Number **LG678506923**
Description **LABORATORY GROWN DIAMOND**
Shape and Cutting Style **CUSHION MIXED CUT**
Measurements **6.14 X 4.95 X 3.45 MM**
GRADING RESULTS
Carat Weight **1.02 CARAT**
Color Grade **FANCY INTENSE YELLOW**
Clarity Grade **VS 1**

LABORATORY GROWN DIAMOND REPORT

January 30, 2025
IGI Report Number **LG678506923**
Description **LABORATORY GROWN DIAMOND**
Shape and Cutting Style **CUSHION MIXED CUT**
Measurements **6.14 X 4.95 X 3.45 MM**

GRADING RESULTS

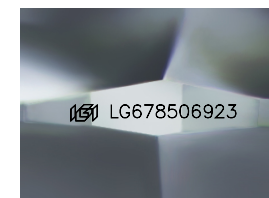
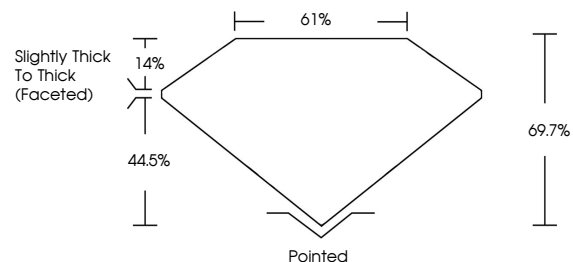
Carat Weight **1.02 CARAT**
Color Grade **FANCY INTENSE YELLOW**
Clarity Grade **VS 1**

ADDITIONAL GRADING INFORMATION

Polish **EXCELLENT**
Symmetry **EXCELLENT**
Fluorescence **NONE**
Inscription(s) **IGI LG678506923**

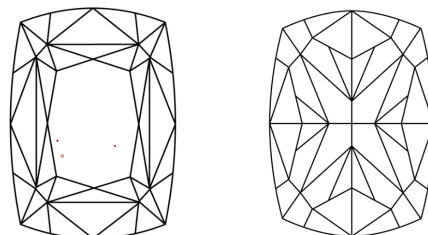
Comments: This Laboratory Grown Diamond was created by Chemical Vapor Deposition (CVD) growth process.

PROPORTIONS



Sample Image Used

CLARITY CHARACTERISTICS



KEY TO SYMBOLS

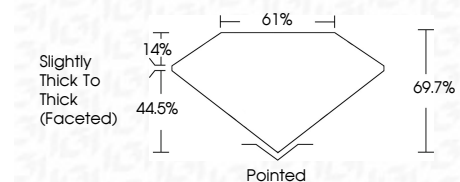
Red symbols indicate internal characteristics.
Green symbols indicate external characteristics.

COLOR

D E F G H I J Faint Very Light Light

CLARITY

IF	VS ¹⁻²	VS ¹⁻²	SI ¹⁻²	I ¹⁻³
Internally Flawless	Very Very Slightly Included	Very Slightly Included	Slightly Included	Included



ADDITIONAL GRADING INFORMATION

Polish **EXCELLENT**
Symmetry **EXCELLENT**
Fluorescence **NONE**
Inscription(s) **IGI LG678506923**
Comments: This Laboratory Grown Diamond was created by Chemical Vapor Deposition (CVD) growth process.



IGI



January 30, 2025
IGI Report No **LG678506923**
CUSHION MIXED CUT
6.14 X 4.95 X 3.45 MM
Carat Weight **1.02 CARAT**
Color Grade **FANCY INTENSE YELLOW**
Clarity Grade **VS 1**
Depth **69.7%**
Table **61%**
Girdle **Slightly Thick To Thick (Faceted)**
Culet **Pointed**
Polish **EXCELLENT**
Symmetry **EXCELLENT**
Fluorescence **NONE**
Inscription(s) **IGI LG678506923**

Comments: This Laboratory Grown Diamond was created by Chemical Vapor Deposition (CVD) growth process.

