

**ELECTRONIC COPY**

## LABORATORY GROWN DIAMOND REPORT

February 18, 2025	
IGI Report Number	LG678537371
Description	LABORATORY GROWN DIAMOND
Shape and Cutting Style	ROUND BRILLIANT
Measurements	6.51 - 6.55 X 3.93 MM

## GRADING RESULTS

Carat Weight	1.03 CARAT
Color Grade	D
Clarity Grade	INTERNALLY FLAWLESS
Cut Grade	IDEAL

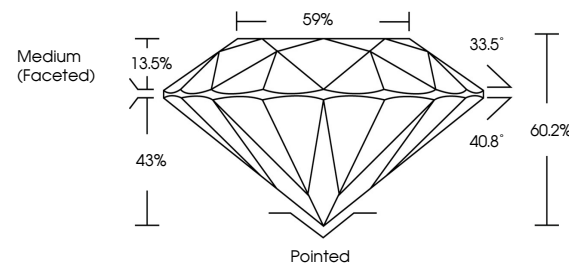
### ADDITIONAL GRADING INFORMATION

Polish	EXCELLENT
Symmetry	EXCELLENT
Fluorescence	NONE
Inscription(s)	 LG678537371

Comments: As Grown - No indication of post-growth treatment.  
This Laboratory Grown Diamond was created by High Pressure High Temperature (HPHT) growth process.  
Type II

LG678537371  
Report verification at [igi.org](https://igi.org)

## PROPORTIONS

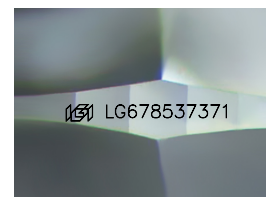


## CLARITY CHARACTERISTICS



## KEY TO SYMBOLS

Red symbols indicate internal characteristics.  
Green symbols indicate external characteristics.



Sample Image Used

**COLOR**

D E F G H I J Faint Very Light Light

## CLARITY

IF      WS<sup>1-2</sup>      VS<sup>1-2</sup>      S<sup>1-2</sup>      |<sup>1-3</sup>

Internally Flawless	Very Very Slightly Included	Very Slightly Included	Slightly Included	Included
------------------------	--------------------------------	---------------------------	----------------------	----------



© IGI 2020, International Gemological Institute

FD - 10 20

**www.igi.org**

THIS DOCUMENT WAS PRODUCED WITH THE FOLLOWING SECURITY MEASURES: SPECIAL DOCUMENT PAPER, INK SCREENS, WATERMARK, BACKGROUND DESIGNS, HOLOGRAM AND OTHER SECURITY FEATURES NOT LISTED AND DO EXCEED DOCUMENT SECURITY INDUSTRY GUIDELINES.

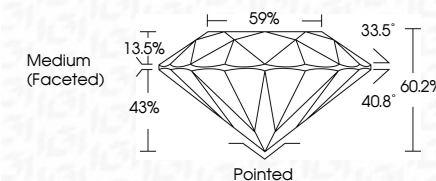
## LABORATORY GROWN DIAMOND REPORT



February 18, 2025	
IGI Report Number	LG678537371
Description	LABORATORY GROWN DIAMOND
Shape and Cutting Style	ROUND BRILLIANT
Measurements	6.51 - 6.55 X 3.93 MM

## GRADING RESULTS

Carat Weight	1.03 CARAT
Color Grade	D
Clarity Grade	INTERNALLY FLAWLESS
Cut Grade	IDEAL



### ADDITIONAL GRADING INFORMATION

Polish	EXCELLENT
Symmetry	EXCELLENT
Fluorescence	NONE
Inscription(s)	<del>LG678537371</del> LG678537371
Comments: As Grown - No indication of post-growth treatment.	
This Laboratory Grown Diamond was created by High Pressure High Temperature (HPHT) growth process.	
Type II	



<b>February 18, 2026</b>	<b>IGI Report No. IGL76837371</b>	<b>ROUND BRILLANT</b>	<b>ROUND - 4.55 X 5.93 MM</b>	<b>Carat Weight</b>	<b>1.03 CARAT</b>	<b>D</b>	<b>I<sub>F</sub></b>	<b>IDEAL</b>	<b>60.2%</b>	<b>59%</b>	<b>Medium Faceted</b>	<b>Poished</b>	<b>EXCELLENT</b>	<b>EXCELLENT</b>	<b>NONE</b>	<b>(ISS) LGG76837371</b>	<b>Comments:</b> As Grown - No indication of post-growth treatment. The Laboratory Grown Diamond was created by High Pressure High Temperature (HPHT) growth process.
				<b>Color Grade</b>			<b>Clarity Grade</b>	<b>Gut Grade</b>	<b>Depth</b>	<b>Table</b>	<b>Girdle</b>	<b>Culet</b>	<b>Symmetry</b>	<b>Fluorescence</b>	<b>Inscription(s)</b>		