



ELECTRONIC COPY

LG678546915
Report verification at igi.org



January 28, 2025

IGI Report Number **LG678546915**

Description **LABORATORY GROWN DIAMOND**

Shape and Cutting Style **SQUARE EMERALD CUT**

Measurements **6.71 X 6.65 X 4.31 MM**

GRADING RESULTS

Carat Weight **1.71 CARAT**

Color Grade **E**

Clarity Grade **VVS 1**

LABORATORY GROWN DIAMOND REPORT

January 28, 2025

IGI Report Number **LG678546915**

Description **LABORATORY GROWN DIAMOND**

Shape and Cutting Style **SQUARE EMERALD CUT**

Measurements **6.71 X 6.65 X 4.31 MM**

GRADING RESULTS

Carat Weight **1.71 CARAT**

Color Grade **E**

Clarity Grade **VVS 1**

ADDITIONAL GRADING INFORMATION

Polish **EXCELLENT**

Symmetry **EXCELLENT**

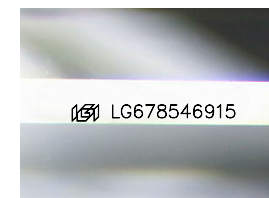
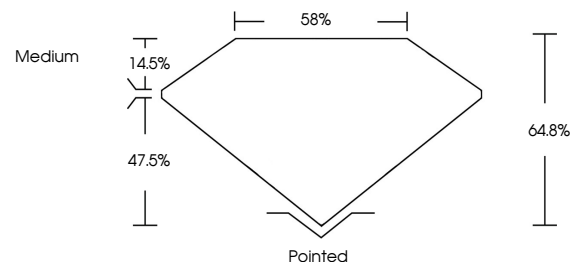
Fluorescence **NONE**

Inscription(s) **IGI LG678546915**

Comments: As Grown - No indication of post-growth treatment.

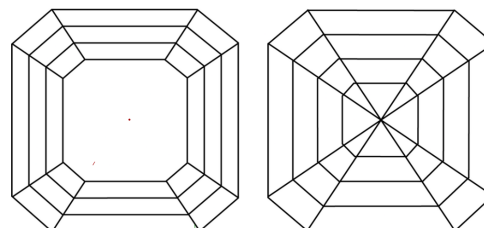
This Laboratory Grown Diamond was created by High Pressure High Temperature (HPHT) growth process. Type II

PROPORTIONS



Sample Image Used

CLARITY CHARACTERISTICS



KEY TO SYMBOLS

Red symbols indicate internal characteristics.
Green symbols indicate external characteristics.

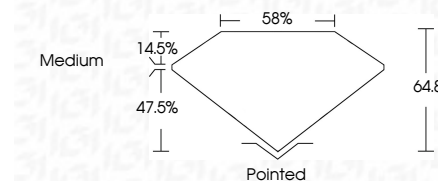
COLOR

D E F G H I J Faint Very Light Light

CLARITY

IF WS¹⁻² VS¹⁻² SI¹⁻² I¹⁻³

Internally Flawless Very Very Slightly Included Very Slightly Included Slightly Included Included



ADDITIONAL GRADING INFORMATION

Polish **EXCELLENT**

Symmetry **EXCELLENT**

Fluorescence **NONE**

Inscription(s) **IGI LG678546915**

Comments: As Grown - No indication of post-growth treatment.

This Laboratory Grown Diamond was created by High Pressure High Temperature (HPHT) growth process. Type II



IGI



| | | | | | | | | | | | |
|---------------------------|-----------------------|---------------|-------|--------|-------|--------|----------|--------------|----------------|--|-----------------|
| January 28, 2025 | 1.71 CARAT | E | VVS 1 | 64.8% | 58% | Medium | Pointed | EXCELLENT | EXCELLENT | NONE | IGI LG678546915 |
| IGI Report No LG678546915 | Color Grade | Clarity Grade | Table | Girdle | Culet | Polish | Symmetry | Fluorescence | Inscription(s) | Comments: As Grown - No indication of post-growth treatment. | |
| SQUARE EMERALD CUT | 6.71 X 6.65 X 4.31 MM | | | | | | | | | This Laboratory Grown Diamond was created by High Pressure High Temperature (HPHT) growth process. Type II | |