



ELECTRONIC COPY

LG679501494
Report verification at igi.org



February 10, 2025

IGI Report Number **LG679501494**

Description **LABORATORY GROWN DIAMOND**

Shape and Cutting Style **ROUND BRILLIANT**

Measurements **6.33 - 6.36 X 3.89 MM**

GRADING RESULTS

Carat Weight **0.97 CARAT**

Color Grade **FANCY VIVID PINK**

Clarity Grade **VVS 1**

Cut Grade **IDEAL**

February 10, 2025
IGI Report Number **LG679501494**
Description **LABORATORY GROWN DIAMOND**
Shape and Cutting Style **ROUND BRILLIANT**
Measurements **6.33 - 6.36 X 3.89 MM**

GRADING RESULTS

Carat Weight **0.97 CARAT**

Color Grade **FANCY VIVID PINK**

Clarity Grade **VVS 1**

Cut Grade **IDEAL**

ADDITIONAL GRADING INFORMATION

Polish **EXCELLENT**

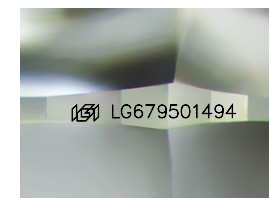
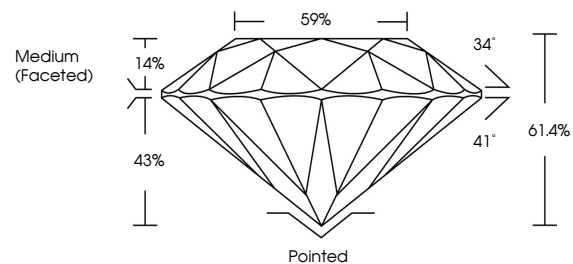
Symmetry **EXCELLENT**

Fluorescence **STRONG**

Inscription(s) **LG679501494**

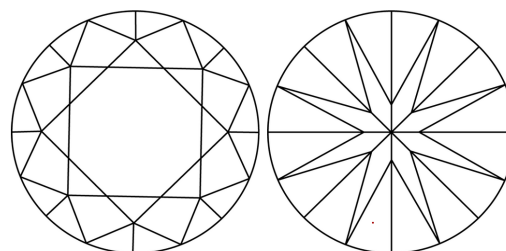
Comments: This Laboratory Grown Diamond was created by Chemical Vapor Deposition (CVD) growth process.
Indications of post-growth treatment.

PROPORTIONS



Sample Image Used

CLARITY CHARACTERISTICS



KEY TO SYMBOLS

Red symbols indicate internal characteristics.
Green symbols indicate external characteristics.

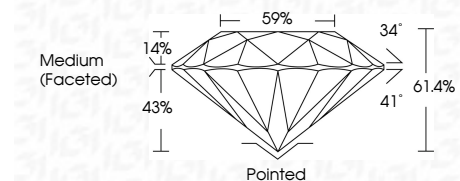
COLOR

D E F G H I J Faint Very Light Light

CLARITY

IF WS¹⁻² VS¹⁻² SI¹⁻² I¹⁻³

Internally Flawless Very Very Slightly Included Very Slightly Included Slightly Included Included



ADDITIONAL GRADING INFORMATION

Polish **EXCELLENT**

Symmetry **EXCELLENT**

Fluorescence **STRONG**

Inscription(s) **LG679501494**

Comments: This Laboratory Grown Diamond was created by Chemical Vapor Deposition (CVD) growth process.
Indications of post-growth treatment.



February 10, 2025	IGI Report No LG679501494	0.97 CARAT	FANCY VIVID PINK	VVS 1	IDEAL	59%	Medium (Faceted)	Pointed	EXCELLENT	EXCELLENT	STRONG	LG679501494
ROUND BRILLIANT	6.33 - 6.36 X 3.89 MM	Carat Weight	Color Grade	Clarity Grade	Depth	Table	Girdle	Culet	Polish	Symmetry	Fluorescence	Inscription(s)

Comments: This Laboratory Grown Diamond was created by Chemical Vapor Deposition (CVD) growth process.
Indications of post-growth treatment.