



ELECTRONIC COPY

LG679512942 Report verification at igi.org



February 6, 2025 IGI Report Number LG679512942 Description LABORATORY GROWN DIAMOND Shape and Cutting Style CUSHION MIXED CUT Measurements 10.15 X 8.10 X 5.45 MM GRADING RESULTS Carat Weight 4.06 CARATS Color Grade FANCY VIVID YELLOW Clarity Grade VS 1

LABORATORY GROWN DIAMOND REPORT

February 6, 2025 IGI Report Number LG679512942 Description LABORATORY GROWN DIAMOND Shape and Cutting Style CUSHION MIXED CUT Measurements 10.15 X 8.10 X 5.45 MM

GRADING RESULTS

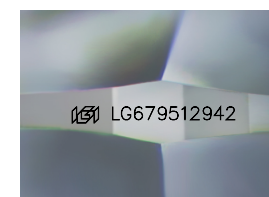
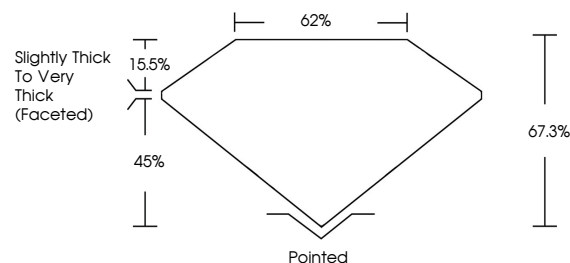
Carat Weight 4.06 CARATS Color Grade FANCY VIVID YELLOW Clarity Grade VS 1

ADDITIONAL GRADING INFORMATION

Polish EXCELLENT Symmetry EXCELLENT Fluorescence NONE Inscription(s) IGI LG679512942

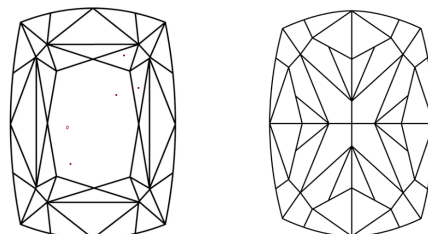
Comments: This Laboratory Grown Diamond was created by Chemical Vapor Deposition (CVD) growth process.

PROPORTIONS



Sample Image Used

CLARITY CHARACTERISTICS



KEY TO SYMBOLS

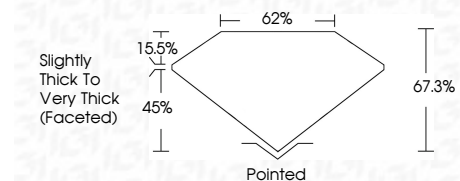
Red symbols indicate internal characteristics. Green symbols indicate external characteristics.

COLOR

D E F G H I J Faint Very Light Light

CLARITY

IF WS 1-2 VS 1-2 SI 1-2 I 1-3 Internally Flawless Very Very Slightly Included Very Slightly Included Slightly Included Included



ADDITIONAL GRADING INFORMATION

Polish EXCELLENT Symmetry EXCELLENT Fluorescence NONE Inscription(s) IGI LG679512942 Comments: This Laboratory Grown Diamond was created by Chemical Vapor Deposition (CVD) growth process.



February 6, 2025 IGI Report No LG679512942 CUSHION MIXED CUT 10.15 X 8.10 X 5.45 MM 4.06 CARATS FANCY VIVID YELLOW VS 1 67.0% 62% Slightly Thick To Very Thick (Faceted) Pointed EXCELLENT EXCELLENT NONE NONE IGI LG679512942 Comments: This Laboratory Grown Diamond was created by Chemical Vapor Deposition (CVD) growth process.

Certified SUSTAINABILITY RATED DIAMOND SCS GLOBAL SERVICES All certified diamonds come with an individual certificate, ONLY available at an accredited retailer. FOR THE SUSTAINABILITY RATED CERTIFICATE, SCAN HERE → [QR code]