



ELECTRONIC COPY

LABORATORY GROWN DIAMOND REPORT

February 5, 2025	
IGI Report Number	LG680585513
Description	LABORATORY GROWN DIAMOND
Shape and Cutting Style	EMERALD CUT
Measurements	10.54 X 7.78 X 5.13 MM

GRADING RESULTS

Carat Weight	4.05 CARATS
Color Grade	E
Clarity Grade	VVS 2

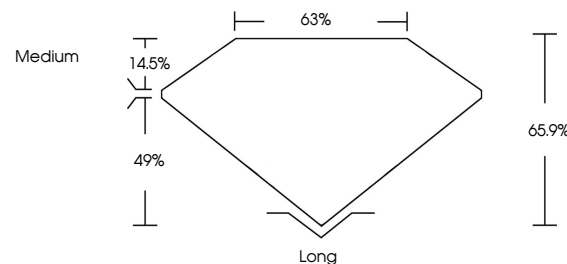
ADDITIONAL GRADING INFORMATION

Polish	EXCELLENT
Symmetry	EXCELLENT
Fluorescence	NONE
Inscription(s)	151 LG680585513

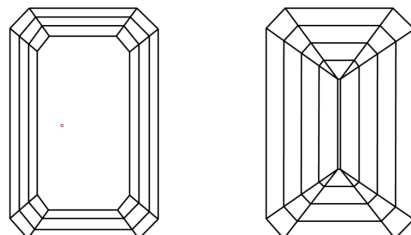
Comments: This Laboratory Grown Diamond was created by Chemical Vapor Deposition (CVD) growth process.
Type IIa

LG680585513
Report verification at igi.org

PROPORTIONS

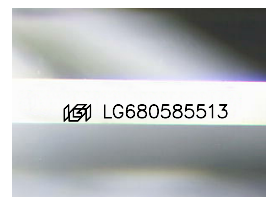


CLARITY CHARACTERISTICS



KEY TO SYMBOLS

Red symbols indicate internal characteristics.
Green symbols indicate external characteristics.



Sample Image Used

COLOR

D E F G H I J Faint Very Light Light

CLARITY

IF	VS ¹⁻²	VS ¹⁻²	SI ¹⁻²	I ¹⁻³
Internally Flawless	Very Very Slightly Included	Very Slightly Included	Slightly Included	Included

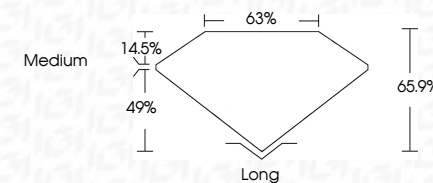
LABORATORY GROWN DIAMOND REPORT



February 5, 2025	
IGI Report Number	LG680585513
Description	LABORATORY GROWN DIAMOND
Shape and Cutting Style	EMERALD CUT
Measurements	10.54 X 7.78 X 5.13 MM

GRADING RESULTS

Carat Weight	4.05 CARATS
Color Grade	E
Clarity Grade	VVS 2



ADDITIONAL GRADING INFORMATION

Polish	EXCELLENT
Symmetry	EXCELLENT
Fluorescence	NONE
Inscription(s)	 LG680585513
Comments: This Laboratory Grown Diamond was created by Chemical Vapor Deposition (CVD) growth process.	
Type IIa	



© IGI 2020, International Gemological Institute

FD - 10 20



THIS DOCUMENT WAS PRODUCED WITH THE FOLLOWING SECURITY MEASURES: SPECIAL DOCUMENT PAPER, INK SCREENS, WATERMARK, BACKGROUND DESIGNS, HOLOGRAM AND OTHER SECURITY FEATURES NOT LISTED AND DO EXCEED DOCUMENT SECURITY INDUSTRY GUIDELINES

February 5, 2025
IGI Report No LG680585513
EMERALD CITE

10.64 X 7.78 X 5.13 MM	Carat Weight	4.05 CARATS
	Color Grade	E
	Clarity Grade	VVS 2
	Depth	65.9%
	Table	63%
	Girdle	Medium
	Culet	Long
	Polish	EXCELLENT
	Symmetry	EXCELLENT
	Fluorescence	NONE
	Comments	see comments

Comments:
This Laboratory Grown Diamond was created by Chemical Vapor Deposition (CVD) growth process.

www.igi.org