



ELECTRONIC COPY

LABORATORY GROWN DIAMOND REPORT

LG681503720
Report verification at igi.org

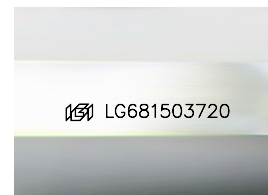
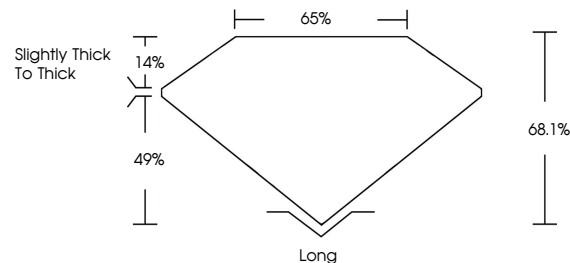
February 27, 2025	
IGI Report Number	LG681503720
Description	LABORATORY GROWN DIAMOND
Shape and Cutting Style	EMERALD CUT
Measurements	7.20 X 4.58 X 3.12 MM
GRADING RESULTS	
Carat Weight	1.00 CARAT
Color Grade	E
Clarity Grade	SI 2

ADDITIONAL GRADING INFORMATION

Polish	EXCELLENT
Symmetry	EXCELLENT
Fluorescence	NONE
Inscription(s)	151 LG681503720

Comments: This Laboratory Grown Diamond was created by Chemical Vapor Deposition (CVD) growth process.
Type IIa

PROPORTIONS



Sample Image Used

COLOR

D E F G H I J Faint Very Light Light

CLARITY

IF VS¹⁻² VS¹⁻² S¹⁻² |¹⁻³

Internally Flawless	Very Very Slightly Included	Very Slightly Included	Slightly Included	Included
------------------------	--------------------------------	---------------------------	----------------------	----------

LABORATORY GROWN DIAMOND REPORT

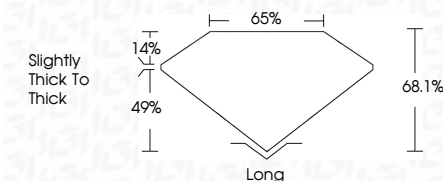


February 27, 2025	
IGI Report Number	LG681503720
Description	LABORATORY GROWN DIAMOND
Shape and Cutting Style	EMERALD CUT
Measurements	7.20 X 4.58 X 3.12 MM
GRADING RESULTS	
Carat Weight	1.00 CARAT
Color Grade	E
Clarity Grade	SI 2

ADDITIONAL GRADING INFORMATION

Polish	EXCELLENT
Symmetry	EXCELLENT
Fluorescence	NONE
Inscription(s)	 LG681503720

Comments: This Laboratory Grown Diamond was created by Chemical Vapor Deposition (CVD) growth process.
Type IIa



© IGI 2020, International Gemological Institute

FD - 10 20



THIS DOCUMENT WAS PRODUCED WITH THE FOLLOWING SECURITY MEASURES: SPECIAL DOCUMENT PAPER, INK SCREENS, WATERMARK, BACKGROUND DESIGNS, HOLOGRAM AND OTHER SECURITY FEATURES NOT LISTED AND DO EXCEED DOCUMENT SECURITY INDUSTRY GUIDELINES

February 27, 2025
 IGI Report No LG681503720

(G) Report No. L-

7.20 X 4.58 X 3.12 MM

7.20 X 4.58 X 3.12 MM

Color Grade	E
-------------	---

Clarity Grade	SI 2
SI 2	

Table	65%
-------	-----

slightly thick to thick.

Culet	Long
Polish	Excellent

Symmetry

Inscription(s)	NGI LG681503720

This Laboratory Grown Diamond was created by Chemical Vapor Deposition

This Laboratory Grown Diamond was created by Chemical Vapor Deposition

Type IIa