



**INTERNATIONAL  
GEMOLOGICAL  
INSTITUTE**

**ELECTRONIC COPY**

LG681503938  
Report verification at [igi.org](https://www.igi.org)

LABORATORY GROWN DIAMOND REPORT



February 28, 2025

IGI Report Number **LG681503938**

Description	LABORATORY GROWN DIAMOND
-------------	--------------------------

Shape and Cutting Style **ROUND BRILLIANT**

Measurements **8.31 - 8.34 X 5.09 MM**

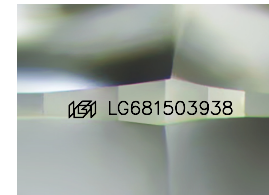
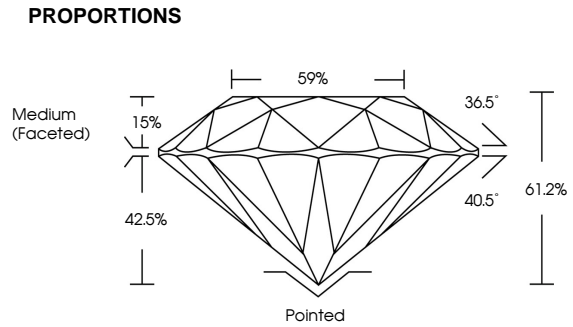
## GRADING RESULTS

Carat Weight **2.18 CARATS**

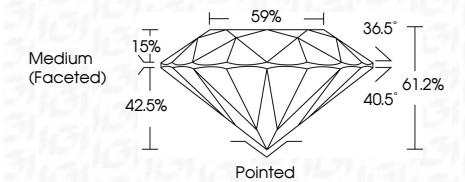
Color Grade	F
-------------	---

Clarity Grade VVS 2

Cut Grade **EXCELLENT**



Sample Image Used



## COLOR

D E F G H I J Faint Very Light Light

## CLARITY

IF      WS<sup>1-2</sup>      VS<sup>1-2</sup>      SI<sup>1-2</sup>      I<sup>1-3</sup>

Internally Flawless	Very Very Slightly Included	Very Slightly Included	Slightly Included	Included
------------------------	--------------------------------	---------------------------	----------------------	----------



© IGI 2020, International Gemological Institute

FD - 10 20

**www.igi.org**

 THIS DOCUMENT WAS PRODUCED WITH THE FOLLOWING SECURITY MEASURES: SPECIAL DOCUMENT PAPER, INK SCREENS, WATERMARK, BACKGROUND DESIGNS, HOLOGRAM AND OTHER SECURITY FEATURES NOT LISTED AND DO EXCEED DOCUMENT SECURITY INDUSTRY GUIDELINES.

### ADDITIONAL GRADING INFORMATION

Polish **EXCELLENT**Symmetry **EXCELLENT**Fluorescence **NONE**Inscription(s)  LG681503938

Comments: This Laboratory Grown Diamond was created by Chemical Vapor Deposition (CVD) growth process.  
Type IIa



IGI

February 28, 2025	
IGI Report No. LG481503958	
ROUND BRILLIANT	
4.31 - 4.34 X 5.09 MM	2.18 CARATS
Color Grade	F
Clarity Grade	VVS 2
Cut Grade	EXCELLENT
Depth	61.2%
Table	59%
Girdle	Medium Faceted
Culet	Pointed
Polish	EXCELLENT
Symmetry	EXCELLENT
Fluorescence	NONE
Inscription(s)	IGI LG481503958
Comments:	
This Laboratory Grown Diamond was created by Chemical Vapor Deposition (CVD) growth process.	
Type IIA	