



ELECTRONIC COPY

LG681576644
Report verification at igi.org



March 13, 2025
IGI Report Number **LG681576644**
Description **LABORATORY GROWN DIAMOND**
Shape and Cutting Style **CUSHION MODIFIED BRILLIANT**
Measurements **7.88 X 6.24 X 4.15 MM**
GRADING RESULTS
Carat Weight **1.58 CARAT**
Color Grade **FANCY VIVID PINK**
Clarity Grade **VVS 2**

March 13, 2025
IGI Report Number **LG681576644**
Description **LABORATORY GROWN DIAMOND**
Shape and Cutting Style **CUSHION MODIFIED BRILLIANT**
Measurements **7.88 X 6.24 X 4.15 MM**

GRADING RESULTS

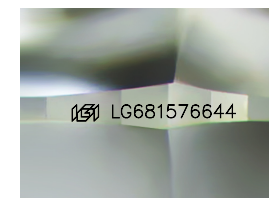
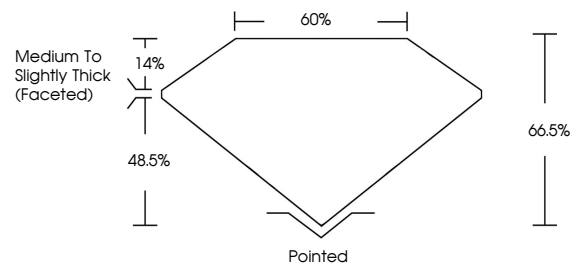
Carat Weight **1.58 CARAT**
Color Grade **FANCY VIVID PINK**
Clarity Grade **VVS 2**

ADDITIONAL GRADING INFORMATION

Polish **VERY GOOD**
Symmetry **VERY GOOD**
Fluorescence **SLIGHT**
Inscription(s) **IGI LG681576644**

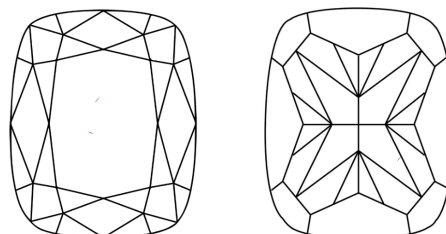
Comments: This Laboratory Grown Diamond was created by Chemical Vapor Deposition (CVD) growth process.
Indications of post-growth treatment.

PROPORTIONS



Sample Image Used

CLARITY CHARACTERISTICS



KEY TO SYMBOLS

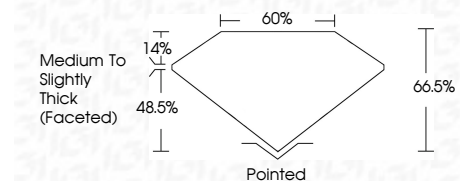
Red symbols indicate internal characteristics.
Green symbols indicate external characteristics.

COLOR

D E F G H I J Faint Very Light Light

CLARITY

IF	VS ¹⁻²	VS ¹⁻²	SI ¹⁻²	I ¹⁻³
Internally Flawless	Very Very Slightly Included	Very Slightly Included	Slightly Included	Included



ADDITIONAL GRADING INFORMATION

Polish **VERY GOOD**
Symmetry **VERY GOOD**
Fluorescence **SLIGHT**
Inscription(s) **IGI LG681576644**
Comments: This Laboratory Grown Diamond was created by Chemical Vapor Deposition (CVD) growth process.
Indications of post-growth treatment.



March 13, 2025
IGI Report No LG681576644
CUSHION MODIFIED BRILLIANT
7.88 X 6.24 X 4.15 MM
1.58 CARAT
FANCY VIVID PINK
VVS 2
66.5%
48.5%
14%
Medium to Slightly Thick (Faceted)
Pointed
Polish VERY GOOD
Symmetry VERY GOOD
Fluorescence SLIGHT
Inscription(s) IGI LG681576644
Comments: This Laboratory Grown Diamond was created by Chemical Vapor Deposition (CVD) growth process.
Indications of post-growth treatment.