



**ELECTRONIC COPY**

LG681576646  
Report verification at igi.org



March 13, 2025  
IGI Report Number **LG681576646**  
Description **LABORATORY GROWN DIAMOND**  
Shape and Cutting Style **CUSHION MODIFIED BRILLIANT**  
Measurements **9.18 X 7.21 X 4.80 MM**  
**GRADING RESULTS**  
Carat Weight **2.45 CARATS**  
Color Grade **FANCY VIVID PINK**  
Clarity Grade **VVS 2**

**LABORATORY GROWN DIAMOND REPORT**

March 13, 2025  
IGI Report Number **LG681576646**  
Description **LABORATORY GROWN DIAMOND**  
Shape and Cutting Style **CUSHION MODIFIED BRILLIANT**  
Measurements **9.18 X 7.21 X 4.80 MM**

**GRADING RESULTS**

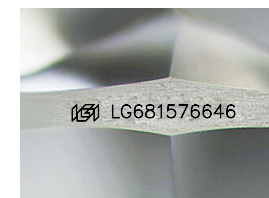
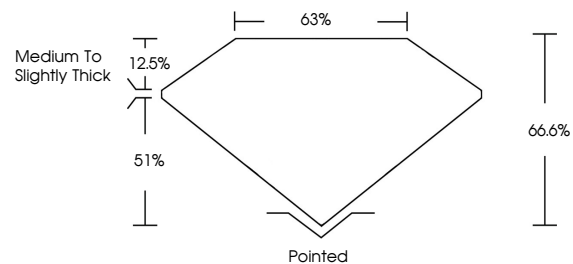
Carat Weight **2.45 CARATS**  
Color Grade **FANCY VIVID PINK**  
Clarity Grade **VVS 2**

**ADDITIONAL GRADING INFORMATION**

Polish **VERY GOOD**  
Symmetry **VERY GOOD**  
Fluorescence **SLIGHT**  
Inscription(s) **IGI LG681576646**

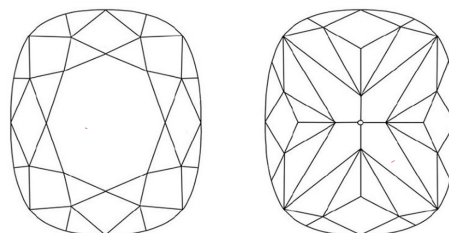
Comments: This Laboratory Grown Diamond was created by Chemical Vapor Deposition (CVD) growth process. Indications of post-growth treatment.

**PROPORTIONS**



Sample Image Used

**CLARITY CHARACTERISTICS**



**KEY TO SYMBOLS**

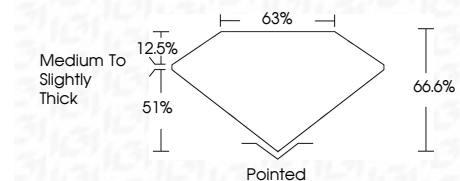
Red symbols indicate internal characteristics.  
Green symbols indicate external characteristics.

**COLOR**

D E F G H I J Faint Very Light Light

**CLARITY**

IF	VS <sup>1-2</sup>	VS <sup>1-2</sup>	SI <sup>1-2</sup>	I <sup>1-3</sup>
Internally Flawless	Very Very Slightly Included	Very Slightly Included	Slightly Included	Included



**ADDITIONAL GRADING INFORMATION**

Polish **VERY GOOD**  
Symmetry **VERY GOOD**  
Fluorescence **SLIGHT**  
Inscription(s) **IGI LG681576646**  
Comments: This Laboratory Grown Diamond was created by Chemical Vapor Deposition (CVD) growth process. Indications of post-growth treatment.



March 13, 2025  
IGI Report No LG681576646  
**CUSHION MODIFIED BRILLIANT**  
9.18 X 7.21 X 4.80 MM  
2.45 CARATS  
FANCY VIVID PINK  
VVS 2  
66.6%  
63%  
Medium to Slightly Thick  
Pointed  
VERY GOOD  
VERY GOOD  
SLIGHT  
IGI LG681576646  
Comments: This Laboratory Grown Diamond was created by Chemical Vapor Deposition (CVD) growth process. Indications of post-growth treatment.