



ELECTRONIC COPY

LG681576656
Report verification at igi.org



March 13, 2025
IGI Report Number **LG681576656**
Description **LABORATORY GROWN DIAMOND**
Shape and Cutting Style **CUSHION MODIFIED BRILLIANT**
Measurements **9.89 X 7.45 X 4.83 MM**
GRADING RESULTS
Carat Weight **2.66 CARATS**
Color Grade **FANCY VIVID PINK**
Clarity Grade **VVS 2**

LABORATORY GROWN DIAMOND REPORT

March 13, 2025
IGI Report Number **LG681576656**
Description **LABORATORY GROWN DIAMOND**
Shape and Cutting Style **CUSHION MODIFIED BRILLIANT**
Measurements **9.89 X 7.45 X 4.83 MM**

GRADING RESULTS

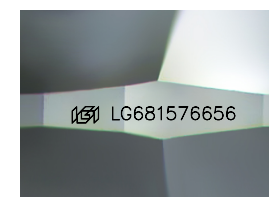
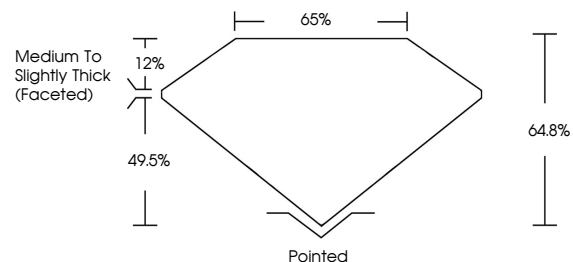
Carat Weight **2.66 CARATS**
Color Grade **FANCY VIVID PINK**
Clarity Grade **VVS 2**

ADDITIONAL GRADING INFORMATION

Polish **VERY GOOD**
Symmetry **VERY GOOD**
Fluorescence **SLIGHT**
Inscription(s) **IGI LG681576656**

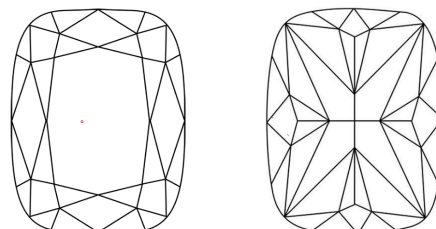
Comments: This Laboratory Grown Diamond was created by Chemical Vapor Deposition (CVD) growth process. Indications of post-growth treatment.

PROPORTIONS



Sample Image Used

CLARITY CHARACTERISTICS



KEY TO SYMBOLS

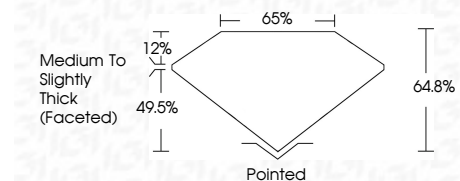
Red symbols indicate internal characteristics.
Green symbols indicate external characteristics.

COLOR

D E F G H I J Faint Very Light Light

CLARITY

IF	VS ¹⁻²	VS ¹⁻²	SI ¹⁻²	I ¹⁻³
Internally Flawless	Very Very Slightly Included	Very Slightly Included	Slightly Included	Included



ADDITIONAL GRADING INFORMATION

Polish **VERY GOOD**
Symmetry **VERY GOOD**
Fluorescence **SLIGHT**
Inscription(s) **IGI LG681576656**
Comments: This Laboratory Grown Diamond was created by Chemical Vapor Deposition (CVD) growth process. Indications of post-growth treatment.



March 13, 2025
IGI Report No LG681576656
CUSHION MODIFIED BRILLIANT
9.89 X 7.45 X 4.83 MM
2.66 CARATS
FANCY VIVID PINK
VVS 2
64.8%
65%
Medium to Slightly Thick (Faceted)
Pointed
Polish VERY GOOD
Symmetry VERY GOOD
Fluorescence SLIGHT
Inscription(s) IGI LG681576656
Comments: This Laboratory Grown Diamond was created by Chemical Vapor Deposition (CVD) growth process. Indications of post-growth treatment.