



ELECTRONIC COPY

LG681576715
Report verification at igi.org



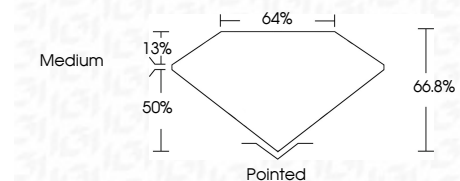
March 13, 2025
IGI Report Number LG681576715
Description LABORATORY GROWN DIAMOND

Shape and Cutting Style CUT CORNERED RECTANGULAR MODIFIED BRILLIANT

Measurements 8.03 X 5.78 X 3.86 MM

GRADING RESULTS

Carat Weight 1.54 CARAT
Color Grade FANCY VIVID PINK
Clarity Grade VVS 2



ADDITIONAL GRADING INFORMATION

Polish EXCELLENT
Symmetry EXCELLENT
Fluorescence SLIGHT
Inscription(s) IGI LG681576715

Comments: This Laboratory Grown Diamond was created by Chemical Vapor Deposition (CVD) growth process. Indications of post-growth treatment.



March 13, 2025
IGI Report No LG681576715
CUT CORNERED RECT. MODIFIED BRILLIANT
1.54 CARAT
FANCY VIVID PINK
VVS 2
66.8%
8.03 X 5.78 X 3.86 MM
Medium
Pointed
EXCELLENT
EXCELLENT
SLIGHT
IGI LG681576715
Comments: This Laboratory Grown Diamond was created by Chemical Vapor Deposition (CVD) growth process. Indications of post-growth treatment.

March 13, 2025
IGI Report Number LG681576715
Description LABORATORY GROWN DIAMOND
Shape and Cutting Style CUT CORNERED RECTANGULAR MODIFIED BRILLIANT
Measurements 8.03 X 5.78 X 3.86 MM

GRADING RESULTS

Carat Weight 1.54 CARAT
Color Grade FANCY VIVID PINK
Clarity Grade VVS 2

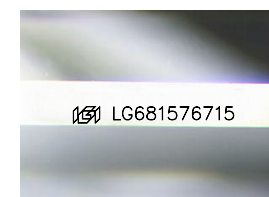
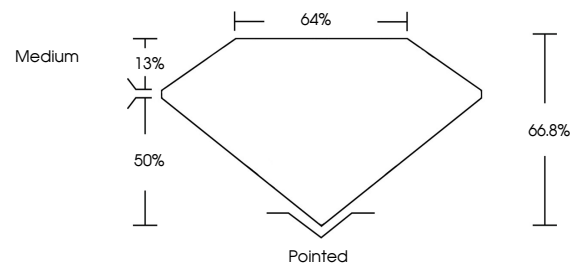
ADDITIONAL GRADING INFORMATION

Polish EXCELLENT
Symmetry EXCELLENT
Fluorescence SLIGHT

Inscription(s) IGI LG681576715

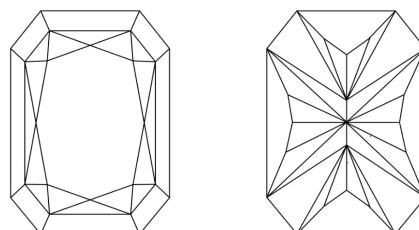
Comments: This Laboratory Grown Diamond was created by Chemical Vapor Deposition (CVD) growth process. Indications of post-growth treatment.

PROPORTIONS



Sample Image Used

CLARITY CHARACTERISTICS



KEY TO SYMBOLS

Red symbols indicate internal characteristics.
Green symbols indicate external characteristics.

COLOR

D E F G H I J Faint Very Light Light

CLARITY

IF VVS 1-2 VS 1-2 SI 1-2 I 1-3
Internally Flawless Very Very Slightly Included Very Slightly Included Slightly Included Included

