



ELECTRONIC COPY

LG681576819
Report verification at igi.org



March 15, 2025
IGI Report Number **LG681576819**
Description **LABORATORY GROWN DIAMOND**
Shape and Cutting Style **EMERALD CUT**
Measurements **8.56 X 6.11 X 3.87 MM**
GRADING RESULTS
Carat Weight **1.99 CARAT**
Color Grade **FANCY VIVID GREEN**
Clarity Grade **VVS 2**

March 15, 2025
IGI Report Number **LG681576819**
Description **LABORATORY GROWN DIAMOND**
Shape and Cutting Style **EMERALD CUT**
Measurements **8.56 X 6.11 X 3.87 MM**

GRADING RESULTS

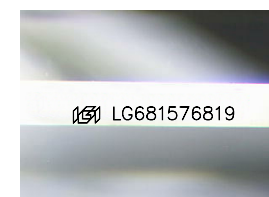
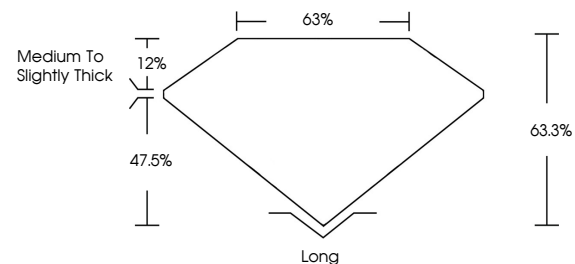
Carat Weight **1.99 CARAT**
Color Grade **FANCY VIVID GREEN**
Clarity Grade **VVS 2**

ADDITIONAL GRADING INFORMATION

Polish **GOOD**
Symmetry **GOOD**
Fluorescence **VERY SLIGHT**
Inscription(s) **IGI LG681576819**

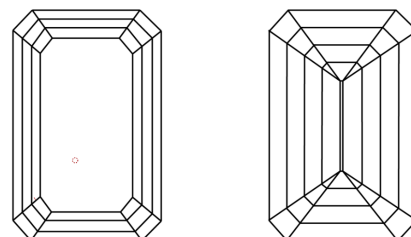
Comments: This Laboratory Grown Diamond was created by Chemical Vapor Deposition (CVD) growth process. Indications of post-growth treatment.

PROPORTIONS



Sample Image Used

CLARITY CHARACTERISTICS



KEY TO SYMBOLS

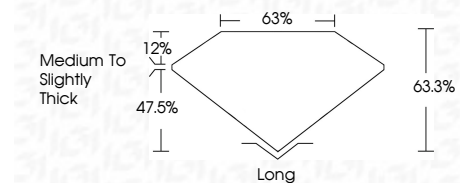
Red symbols indicate internal characteristics.
Green symbols indicate external characteristics.

COLOR

D E F G H I J Faint Very Light Light

CLARITY

IF	WS ¹⁻²	VS ¹⁻²	SI ¹⁻²	I ¹⁻³
Internally Flawless	Very Very Slightly Included	Very Slightly Included	Slightly Included	Included



ADDITIONAL GRADING INFORMATION

Polish **GOOD**
Symmetry **GOOD**
Fluorescence **VERY SLIGHT**
Inscription(s) **IGI LG681576819**
Comments: This Laboratory Grown Diamond was created by Chemical Vapor Deposition (CVD) growth process. Indications of post-growth treatment.



IGI



March 15, 2025
IGI Report No. **LG681576819**
EMERALD CUT
Carat Weight **1.99 CARAT**
Color Grade **FANCY VIVID GREEN**
Clarity Grade **VVS 2**
Table **63%**
Girdle **Medium to Slightly Thick**
Culet **Long**
Polish **GOOD**
Symmetry **GOOD**
Fluorescence **VERY SLIGHT**
Inscription(s) **IGI LG681576819**
Comments: This Laboratory Grown Diamond was created by Chemical Vapor Deposition (CVD) growth process. Indications of post-growth treatment.