



**ELECTRONIC COPY**

LG681576908  
Report verification at igi.org



March 15, 2025  
IGI Report Number **LG681576908**  
Description **LABORATORY GROWN DIAMOND**  
Shape and Cutting Style **ROUND BRILLIANT**  
Measurements **7.07 - 7.12 X 4.39 MM**  
**GRADING RESULTS**  
Carat Weight **1.36 CARAT**  
Color Grade **FANCY INTENSE PINK**  
Clarity Grade **VS 1**  
Cut Grade **IDEAL**

March 15, 2025  
IGI Report Number **LG681576908**  
Description **LABORATORY GROWN DIAMOND**  
Shape and Cutting Style **ROUND BRILLIANT**  
Measurements **7.07 - 7.12 X 4.39 MM**

**GRADING RESULTS**

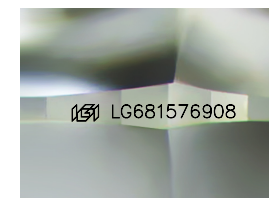
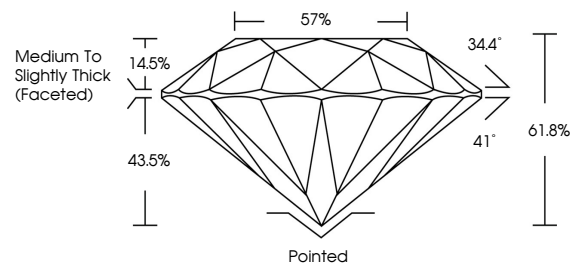
Carat Weight **1.36 CARAT**  
Color Grade **FANCY INTENSE PINK**  
Clarity Grade **VS 1**  
Cut Grade **IDEAL**

**ADDITIONAL GRADING INFORMATION**

Polish **VERY GOOD**  
Symmetry **EXCELLENT**  
Fluorescence **SLIGHT**  
Inscription(s) **LG681576908**

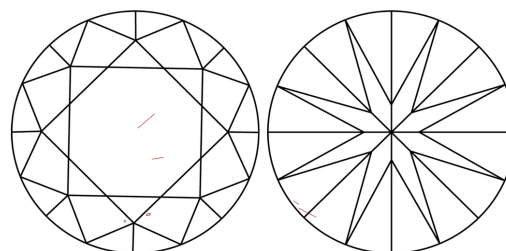
Comments: This Laboratory Grown Diamond was created by High Pressure High Temperature (HPHT) growth process. Indications of post-growth treatment.

**PROPORTIONS**



Sample Image Used

**CLARITY CHARACTERISTICS**



**KEY TO SYMBOLS**

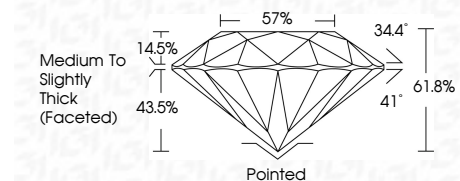
Red symbols indicate internal characteristics.  
Green symbols indicate external characteristics.

**COLOR**

D E F G H I J Faint Very Light Light

**CLARITY**

IF	VS <sup>1-2</sup>	VS <sup>1-2</sup>	SI <sup>1-2</sup>	I <sup>1-3</sup>
Internally Flawless	Very Very Slightly Included	Very Slightly Included	Slightly Included	Included



**ADDITIONAL GRADING INFORMATION**

Polish **VERY GOOD**  
Symmetry **EXCELLENT**  
Fluorescence **SLIGHT**  
Inscription(s) **LG681576908**  
Comments: This Laboratory Grown Diamond was created by High Pressure High Temperature (HPHT) growth process. Indications of post-growth treatment.



March 15, 2025  
IGI Report No LG681576908  
**ROUND BRILLIANT**  
1.36 CARAT  
FANCY INTENSE PINK  
VS 1  
IDEAL  
61.8%  
57%  
Medium To Slightly Thick (Faceted)  
Pointed  
VERY GOOD  
EXCELLENT  
SLIGHT  
IGI LG681576908  
Comments: This Laboratory Grown Diamond was created by High Pressure High Temperature (HPHT) growth process. Indications of post-growth treatment.