



ELECTRONIC COPY

LG681576921
Report verification at igi.org



March 15, 2025

IGI Report Number **LG681576921**

Description **LABORATORY GROWN DIAMOND**

Shape and Cutting Style **ROUND BRILLIANT**

Measurements **8.38 - 8.46 X 5.12 MM**

GRADING RESULTS

Carat Weight **2.25 CARATS**

Color Grade **FANCY VIVID GREEN**

Clarity Grade **VS 1**

Cut Grade **EXCELLENT**

March 15, 2025
IGI Report Number **LG681576921**
Description **LABORATORY GROWN DIAMOND**
Shape and Cutting Style **ROUND BRILLIANT**
Measurements **8.38 - 8.46 X 5.12 MM**

GRADING RESULTS

Carat Weight **2.25 CARATS**

Color Grade **FANCY VIVID GREEN**

Clarity Grade **VS 1**

Cut Grade **EXCELLENT**

ADDITIONAL GRADING INFORMATION

Polish **VERY GOOD**

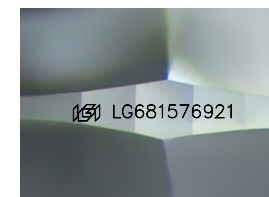
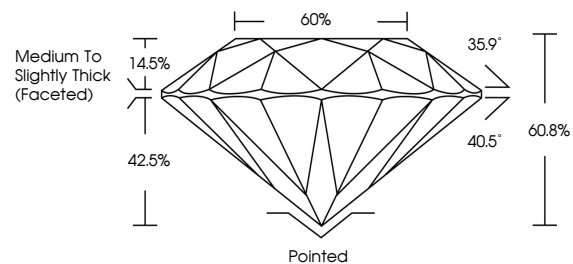
Symmetry **VERY GOOD**

Fluorescence **NONE**

Inscription(s) **IGI LG681576921**

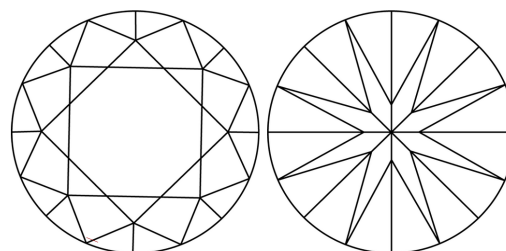
Comments: This Laboratory Grown Diamond was created by High Pressure High Temperature (HPHT) growth process. Indications of post-growth treatment.

PROPORTIONS



Sample Image Used

CLARITY CHARACTERISTICS



KEY TO SYMBOLS

Red symbols indicate internal characteristics.
Green symbols indicate external characteristics.

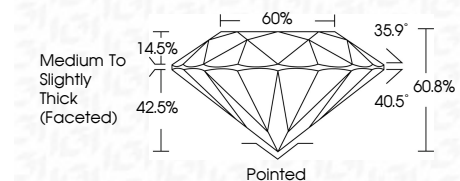
COLOR

D E F G H I J Faint Very Light Light

CLARITY

IF VS¹⁻² VS¹⁻² SI¹⁻² I¹⁻³

Internally Flawless Very Very Slightly Included Very Slightly Included Slightly Included Included



ADDITIONAL GRADING INFORMATION

Polish **VERY GOOD**

Symmetry **VERY GOOD**

Fluorescence **NONE**

Inscription(s) **IGI LG681576921**

Comments: This Laboratory Grown Diamond was created by High Pressure High Temperature (HPHT) growth process. Indications of post-growth treatment.



IGI



March 15, 2025
IGI Report No LG681576921
ROUND BRILLIANT
8.38 - 8.46 X 5.12 MM
2.25 CARATS
FANCY VIVID GREEN
Color Grade
Clarity Grade VS 1
Depth 60.8%
Table 60%
Girdle
Medium To Slightly Thick (Faceted)
Culet Pointed
Polish VERY GOOD
Symmetry VERY GOOD
Fluorescence NONE
Inscriptions(s) IGI LG681576921
Comments: This Laboratory Grown Diamond was created by High Pressure High Temperature (HPHT) growth process. Indications of post-growth treatment.