



ELECTRONIC COPY

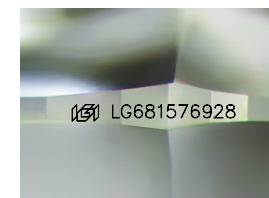
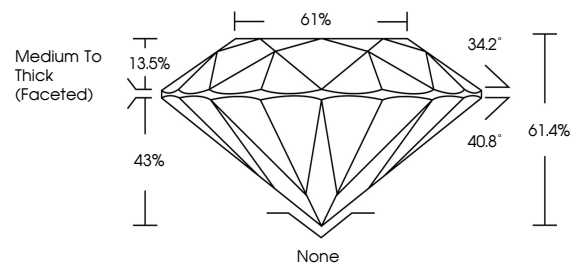
LG681576928
Report verification at igi.org



March 15, 2025
IGI Report Number **LG681576928**
Description **LABORATORY GROWN DIAMOND**
Shape and Cutting Style **ROUND BRILLIANT**
Measurements **7.30 - 7.34 X 4.49 MM**
GRADING RESULTS
Carat Weight **1.52 CARAT**
Color Grade **FANCY VIVID GREEN**
Clarity Grade **VS 2**
Cut Grade **VERY GOOD**

March 15, 2025
IGI Report Number **LG681576928**
Description **LABORATORY GROWN DIAMOND**
Shape and Cutting Style **ROUND BRILLIANT**
Measurements **7.30 - 7.34 X 4.49 MM**

PROPORTIONS

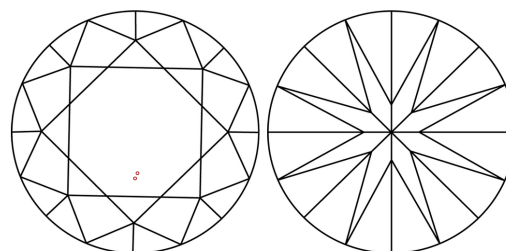


Sample Image Used

GRADING RESULTS

Carat Weight **1.52 CARAT**
Color Grade **FANCY VIVID GREEN**
Clarity Grade **VS 2**
Cut Grade **VERY GOOD**

CLARITY CHARACTERISTICS



KEY TO SYMBOLS

Red symbols indicate internal characteristics.
Green symbols indicate external characteristics.

ADDITIONAL GRADING INFORMATION

Polish **VERY GOOD**
Symmetry **VERY GOOD**
Fluorescence **NONE**
Inscription(s) **IGI LG681576928**

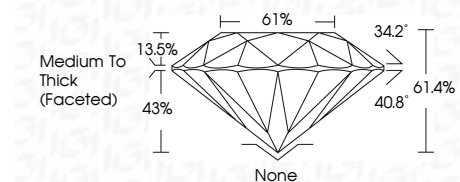
Comments: This Laboratory Grown Diamond was created by High Pressure High Temperature (HPHT) growth process.
Indications of post-growth treatment.

COLOR

D E F G H I J Faint Very Light Light

CLARITY

IF	VS ¹⁻²	VS ¹⁻²	SI ¹⁻²	I ¹⁻³
Internally Flawless	Very Very Slightly Included	Very Slightly Included	Slightly Included	Included



ADDITIONAL GRADING INFORMATION

Polish **VERY GOOD**
Symmetry **VERY GOOD**
Fluorescence **NONE**
Inscription(s) **IGI LG681576928**
Comments: This Laboratory Grown Diamond was created by High Pressure High Temperature (HPHT) growth process.
Indications of post-growth treatment.



March 15, 2025
IGI Report No LG681576928
ROUND BRILLIANT
1.52 CARAT
Color Grade **FANCY VIVID GREEN**
Clarity Grade **VS 2**
Depth **61.4%**
Table **61%**
Girdle **Medium To Thick (Faceted)**
Culet **None**
Polish **VERY GOOD**
Symmetry **VERY GOOD**
Fluorescence **NONE**
Inscriptions(s) **IGI LG681576928**

Comments: This Laboratory Grown Diamond was created by High Pressure High Temperature (HPHT) growth process.
Indications of post-growth treatment.