



ELECTRONIC COPY

LG681576929
Report verification at igi.org



March 15, 2025

IGI Report Number **LG681576929**

Description **LABORATORY GROWN DIAMOND**

Shape and Cutting Style **ROUND BRILLIANT**

Measurements **7.35 - 7.39 X 4.47 MM**

GRADING RESULTS

Carat Weight **1.50 CARAT**

Color Grade **FANCY VIVID GREEN**

Clarity Grade **VS 2**

Cut Grade **IDEAL**

March 15, 2025
IGI Report Number **LG681576929**
Description **LABORATORY GROWN DIAMOND**
Shape and Cutting Style **ROUND BRILLIANT**
Measurements **7.35 - 7.39 X 4.47 MM**

GRADING RESULTS

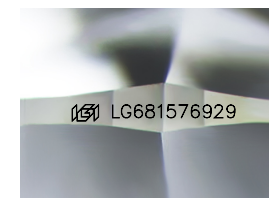
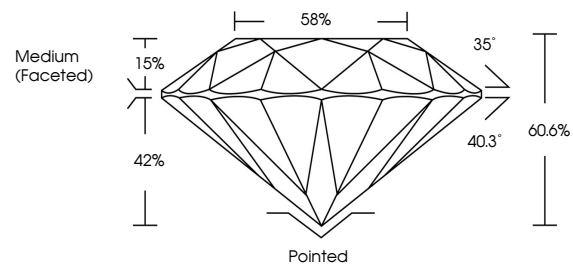
Carat Weight **1.50 CARAT**
Color Grade **FANCY VIVID GREEN**
Clarity Grade **VS 2**
Cut Grade **IDEAL**

ADDITIONAL GRADING INFORMATION

Polish **VERY GOOD**
Symmetry **VERY GOOD**
Fluorescence **NONE**
Inscription(s) **IGI LG681576929**

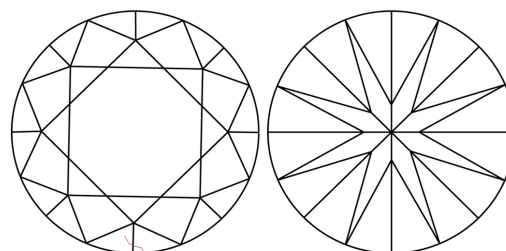
Comments: This Laboratory Grown Diamond was created by High Pressure High Temperature (HPHT) growth process.
Indications of post-growth treatment.

PROPORTIONS



Sample Image Used

CLARITY CHARACTERISTICS



KEY TO SYMBOLS

Red symbols indicate internal characteristics.
Green symbols indicate external characteristics.

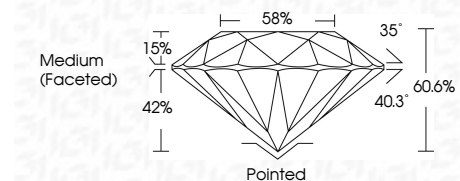
COLOR

D E F G H I J Faint Very Light Light

CLARITY

IF VS¹⁻² VS¹⁻² SI¹⁻² I¹⁻³

Internally Flawless Very Very Slightly Included Very Slightly Included Slightly Included Included



ADDITIONAL GRADING INFORMATION

Polish **VERY GOOD**
Symmetry **VERY GOOD**
Fluorescence **NONE**
Inscription(s) **IGI LG681576929**
Comments: This Laboratory Grown Diamond was created by High Pressure High Temperature (HPHT) growth process.
Indications of post-growth treatment.



IGI



March 15, 2025
IGI Report No LG681576929
ROUND BRILLIANT

1.50 CARAT
Carat Weight
FANCY VIVID GREEN
Color Grade

VS 2
Clarity Grade

IDEAL
Cut Grade

60.6%
Depth

58%
Girdle

Medium (Faceted)

Pointed
Culet
VERY GOOD
Polish

VERY GOOD
Symmetry

NONE
Fluorescence

NONE
Inscriptions(s)
IGI LG681576929

Comments: This Laboratory Grown Diamond was created by High Pressure High Temperature (HPHT) growth process.
Indications of post-growth treatment.