



**ELECTRONIC COPY**

LG683510321  
Report verification at igi.org



February 18, 2025

IGI Report Number **LG683510321**

Description **LABORATORY GROWN DIAMOND**

Shape and Cutting Style **KITE STEP CUT**

Measurements **11.74 X 7.38 X 3.99 MM**

**GRADING RESULTS**

Carat Weight **1.75 CARAT**

Color Grade **G**

Clarity Grade **VVS 2**

February 18, 2025  
IGI Report Number **LG683510321**  
Description **LABORATORY GROWN DIAMOND**  
Shape and Cutting Style **KITE STEP CUT**  
Measurements **11.74 X 7.38 X 3.99 MM**

**GRADING RESULTS**

Carat Weight **1.75 CARAT**

Color Grade **G**

Clarity Grade **VVS 2**

**ADDITIONAL GRADING INFORMATION**

Polish **EXCELLENT**

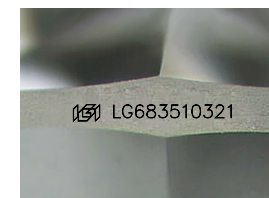
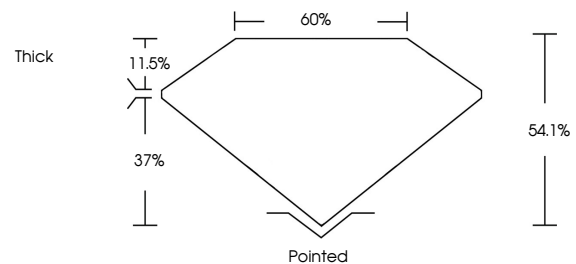
Symmetry **EXCELLENT**

Fluorescence **NONE**

Inscription(s) **LG683510321**

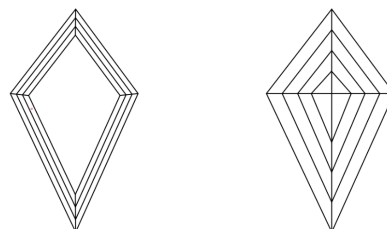
Comments: This Laboratory Grown Diamond was created by Chemical Vapor Deposition (CVD) growth process.  
Type IIa

**PROPORTIONS**



Sample Image Used

**CLARITY CHARACTERISTICS**



**KEY TO SYMBOLS**

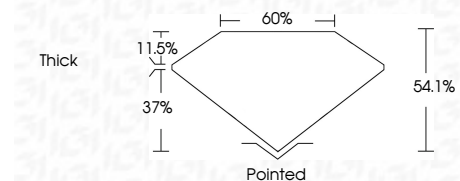
Red symbols indicate internal characteristics.  
Green symbols indicate external characteristics.

**COLOR**

D E F G H I J Faint Very Light Light

**CLARITY**

IF	VS <sup>1-2</sup>	VS <sup>1-2</sup>	SI <sup>1-2</sup>	I <sup>1-3</sup>
Internally Flawless	Very Very Slightly Included	Very Slightly Included	Slightly Included	Included



**ADDITIONAL GRADING INFORMATION**

Polish **EXCELLENT**

Symmetry **EXCELLENT**

Fluorescence **NONE**

Inscription(s) **LG683510321**

Comments: This Laboratory Grown Diamond was created by Chemical Vapor Deposition (CVD) growth process.  
Type IIa



February 18, 2025  
IGI Report No. LG683510321  
KITE STEP CUT

11.74 X 7.38 X 3.99 MM  
1.75 CARAT  
G  
VVS 2  
54.1%  
60%  
Thick  
Pointed  
EXCELLENT  
EXCELLENT  
NONE  
IGI LG683510321

Comments: This Laboratory Grown Diamond was created by Chemical Vapor Deposition (CVD) growth process.  
Type IIa